The background of the slide is a 3D wireframe grid on an orange-to-white gradient. On the left side, there is a glowing orange cube. To its right, there is a glowing orange sphere with the text 'V1 Type' and 'Box' written on it in a glowing orange font.

VERTICAL TURBINE PUMP INSTALLATION NOTES V1 TYPE ELECTRICAL MOTOR

PREPARATION FOR INSTALLATION (1/3)



- Take the user manual beside you.
- Check the well straightness
- Check the water level according to the recommendation of LB minimum water level. (This information should be given at the offering stage)
- Make sure that all the necessary equipments are available at site (Including mentling and dismentling parts)
- Be sure that the anchors are built according to the technical drawing given by LB
- Concrete is well-prepared according to the base plate
- Make sure of the capacity of your crane
- Prepare the special tools for assembling, such as I-beam support and clamps.
- Standard tools, such as wrench, hummer and screwdrivers.
- Make sure that all the pump assemblies are next to you with the correct installation sequence.

PREPARATION FOR INSTALLATION (2/3)



PREPARATION FOR INSTALLATION (3/3)



BOWL ASSEMBLY (1/3)

- Use the proper crane to lift the bowl assembly.



- Install the bowl assembly up to its discharge flange or thread.



- Screw the pump shaft with the first line shaft coupling.



- Screw the first line shaft to the first line shaft coupling.



COLUMN ASSEMBLY (2/6)

- Connect the first column pipe to the discharge case or conical discharge pipe of the column with bolts and nuts. Be sure that bolts and nuts are well-tightened.

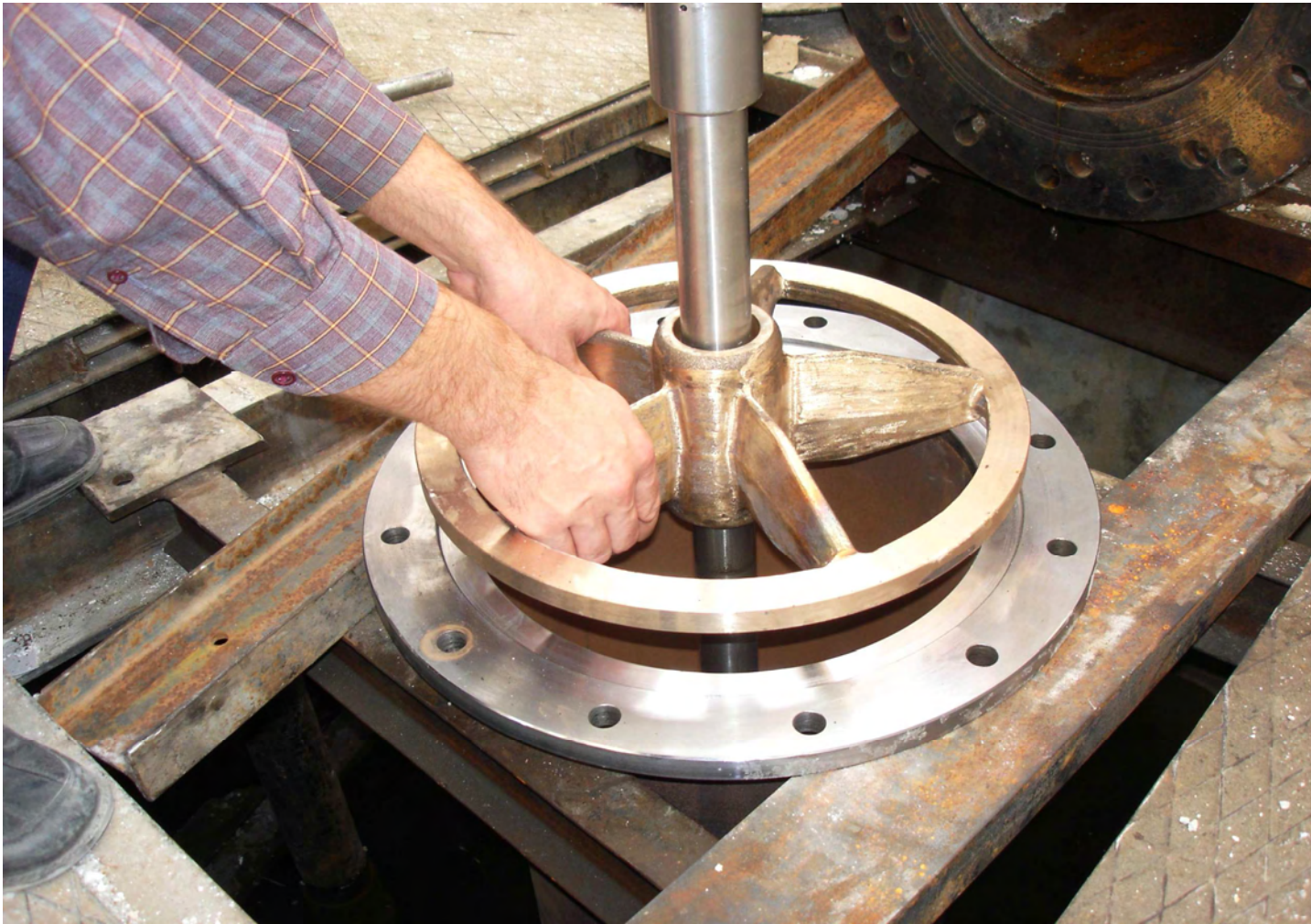


- Install the first connected column pipe assembly to the well or tank up to upper side flange.



COLUMN ASSEMBLY (4/6)

- Install the first bearing retainer

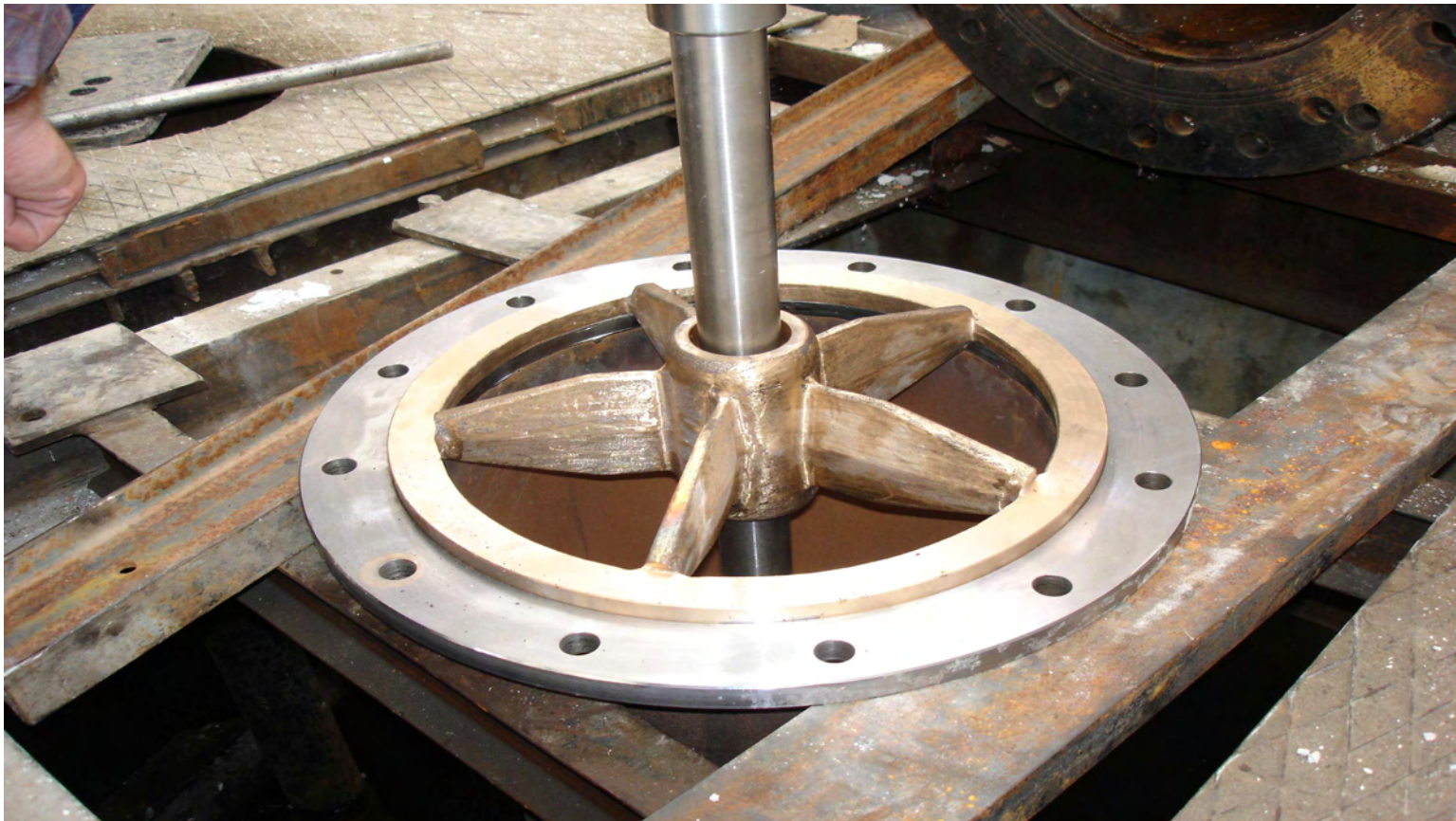


- Repeat the same process for the second line shaft. Screw the second line shaft coupling to the first line shaft.



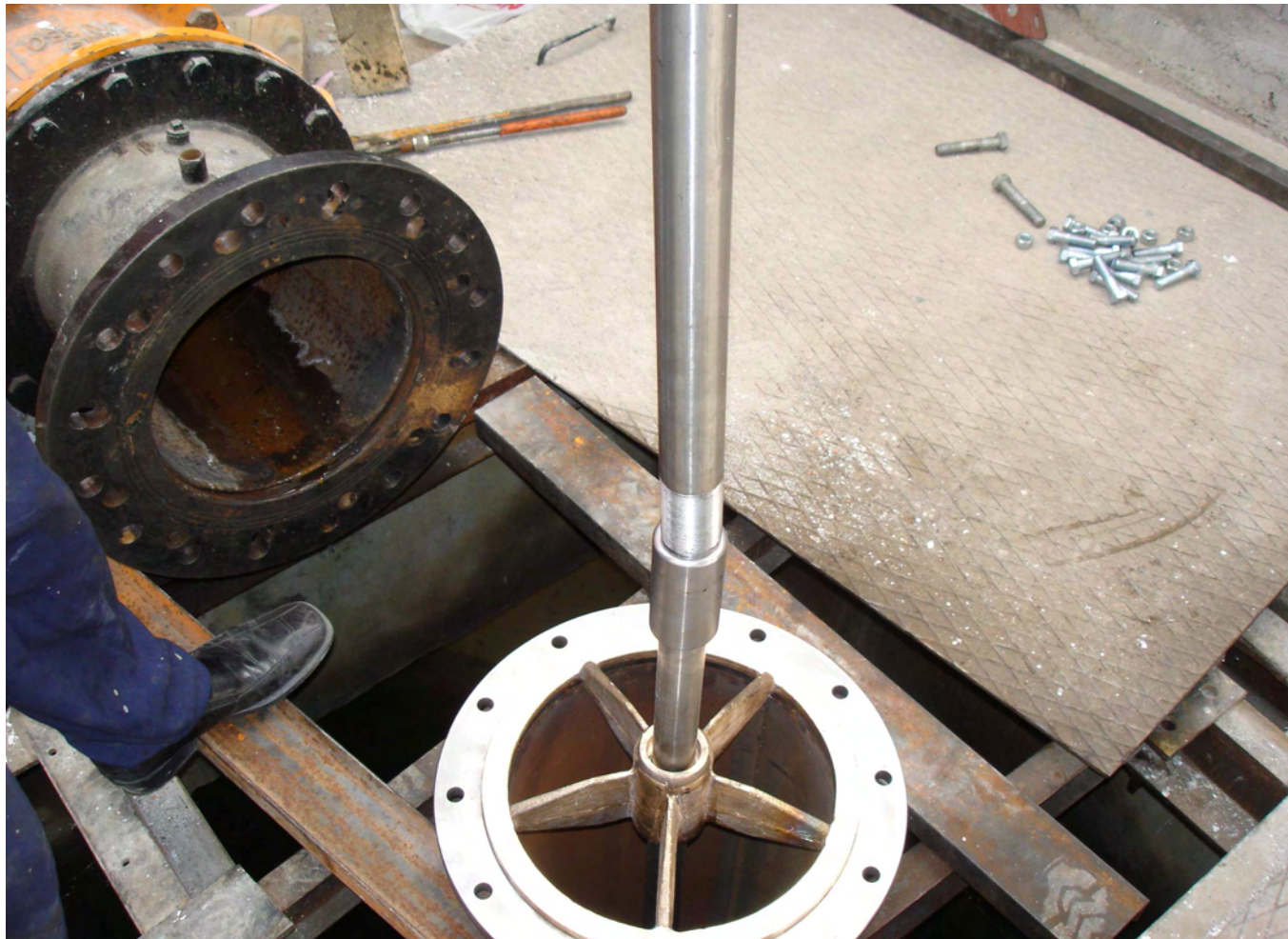
COLUMN ASSEMBLY (6/6)

- Install the second column pipe with bearing retainer up to upper side flange. Then screw the head shaft-line shaft coupling to the last line shaft.



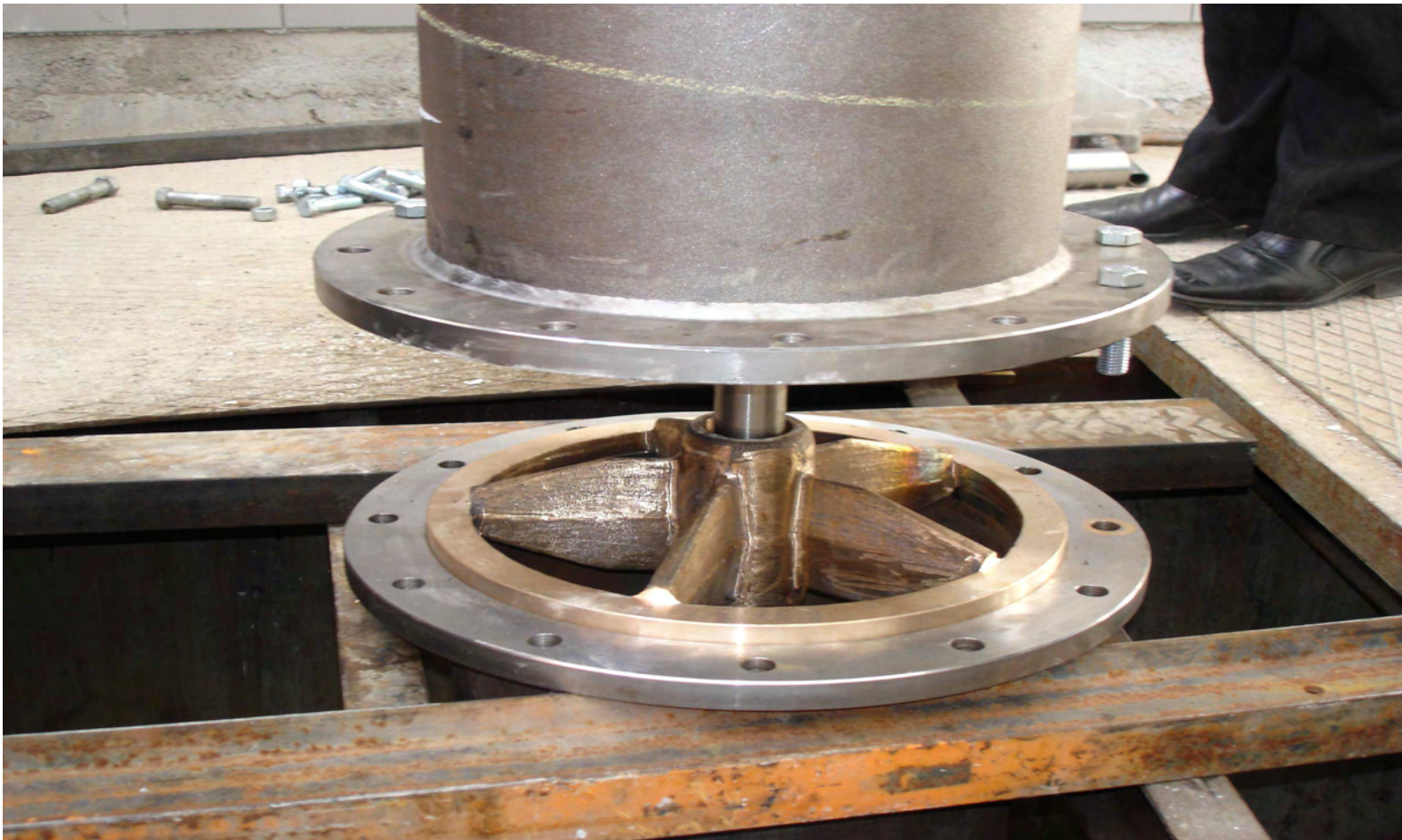
HEAD ASSEMBLY (1/5)

- Screw the discharge head shaft to the last coupling called line shaft-head shaft coupling.



HEAD ASSEMBLY (2/5)

- After screwing of discharge head shaft. Install the short column pipe which is located between the discharge head and the last column pipe.



HEAD ASSEMBLY (3/5)

- Separate the discharge head delivered together with thrust assembly, stuffing assembly and intermediate part.



HEAD ASSEMBLY (4/5)

- Connect the discharge and short column pipe bu using bolts.



HEAD ASSEMBLY (5/5)

- Install the discharge head on the base plate or concrete



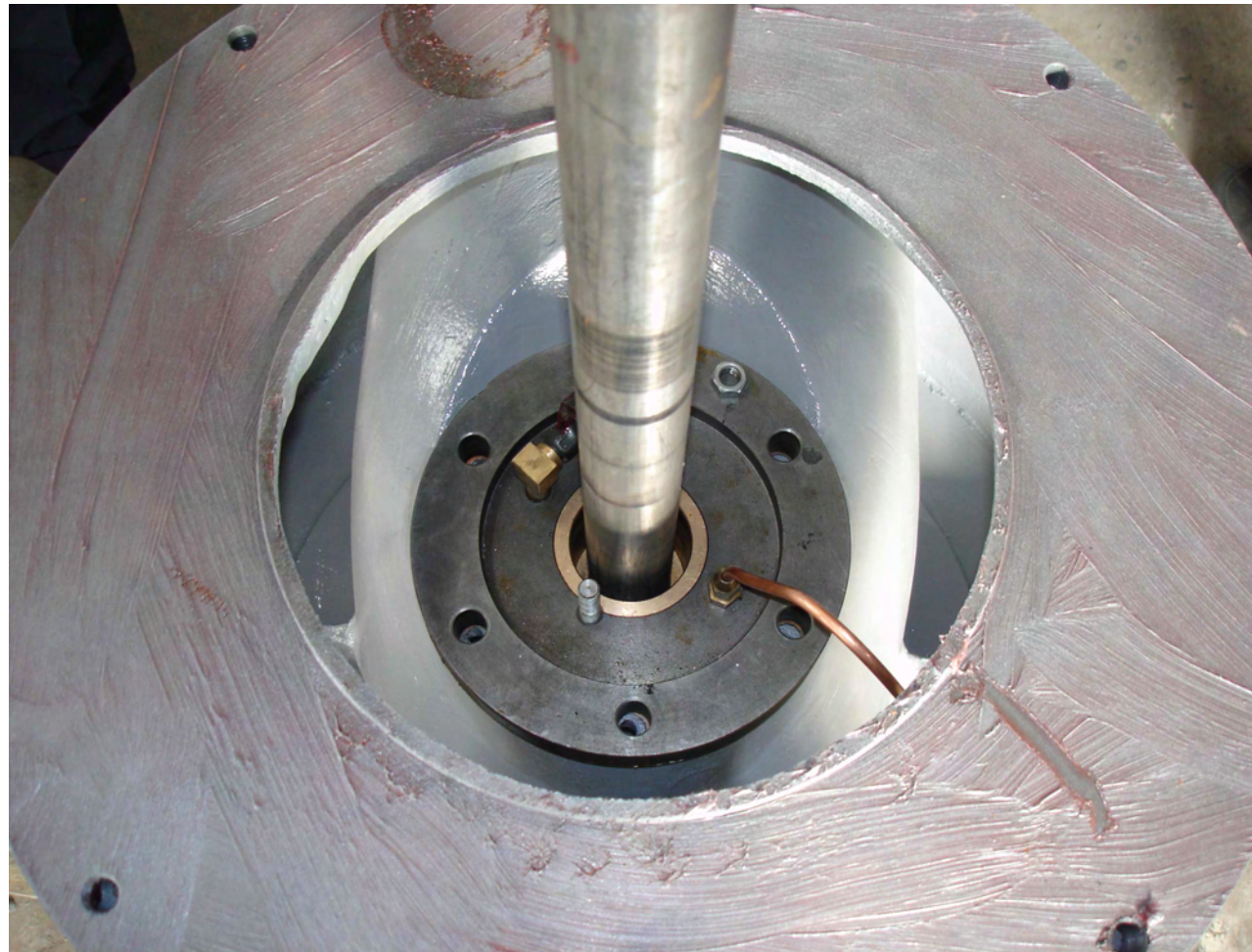
STUFFING ASSEMBLY (1/5)

- Install the stuffing assembly.



STUFFING ASSEMBLY (2/5)

- After installing the stuffing assembly, fixed it with bolts to the discharge head.



STUFFING ASSEMBLY (3/5)

- Put enough soft packing between the stuffing assembly bearing and head shaft.



STUFFING ASSEMBLY (4/5)

- After putting enough stuffing assembly, install the stuffing box gland.



STUFFING ASSEMBLY (5/5)

- Fix the stuffing assembly gland with bolts.



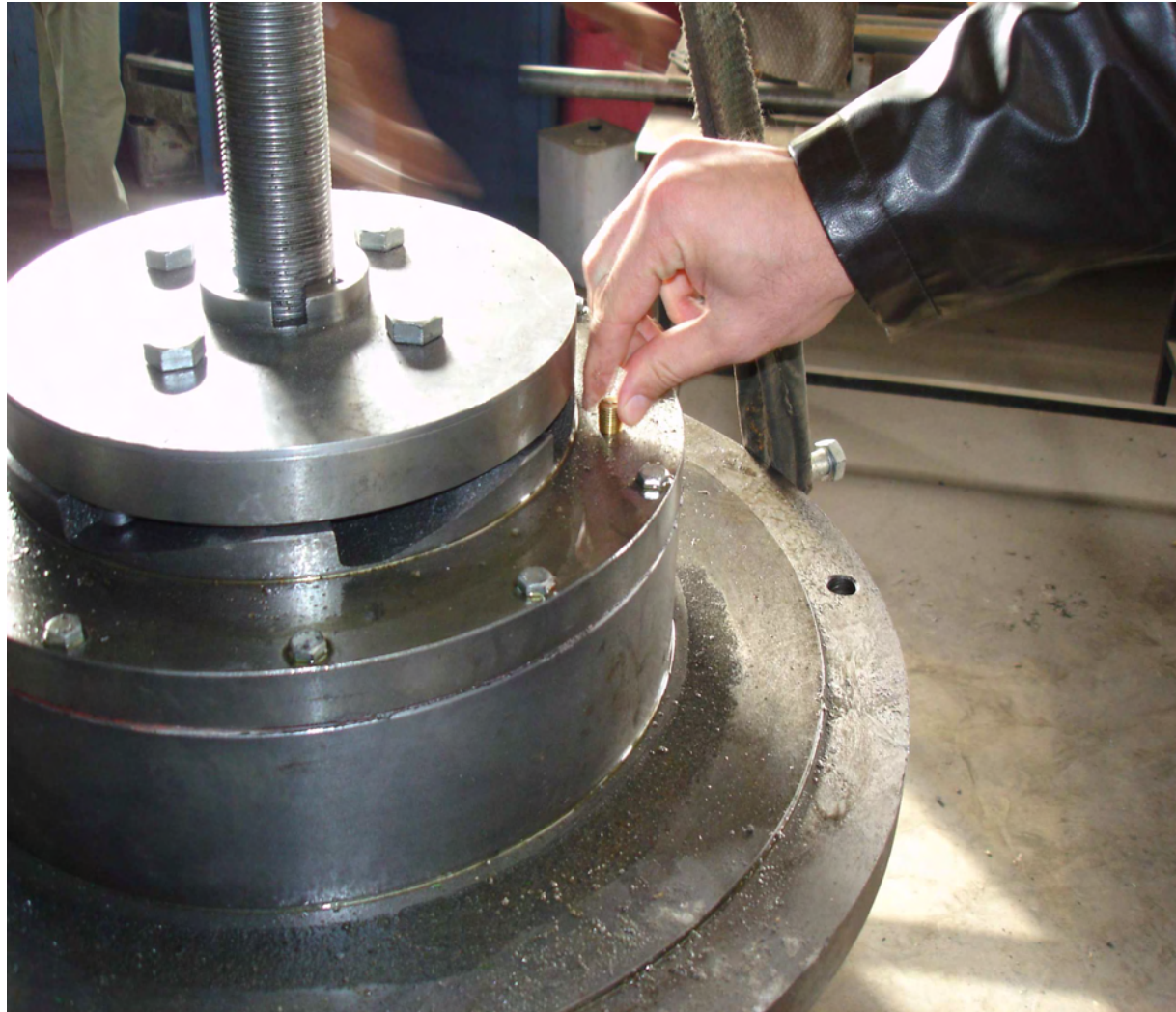
THRUST ASSEMBLY (1/10)

- Install the thrust assembly.



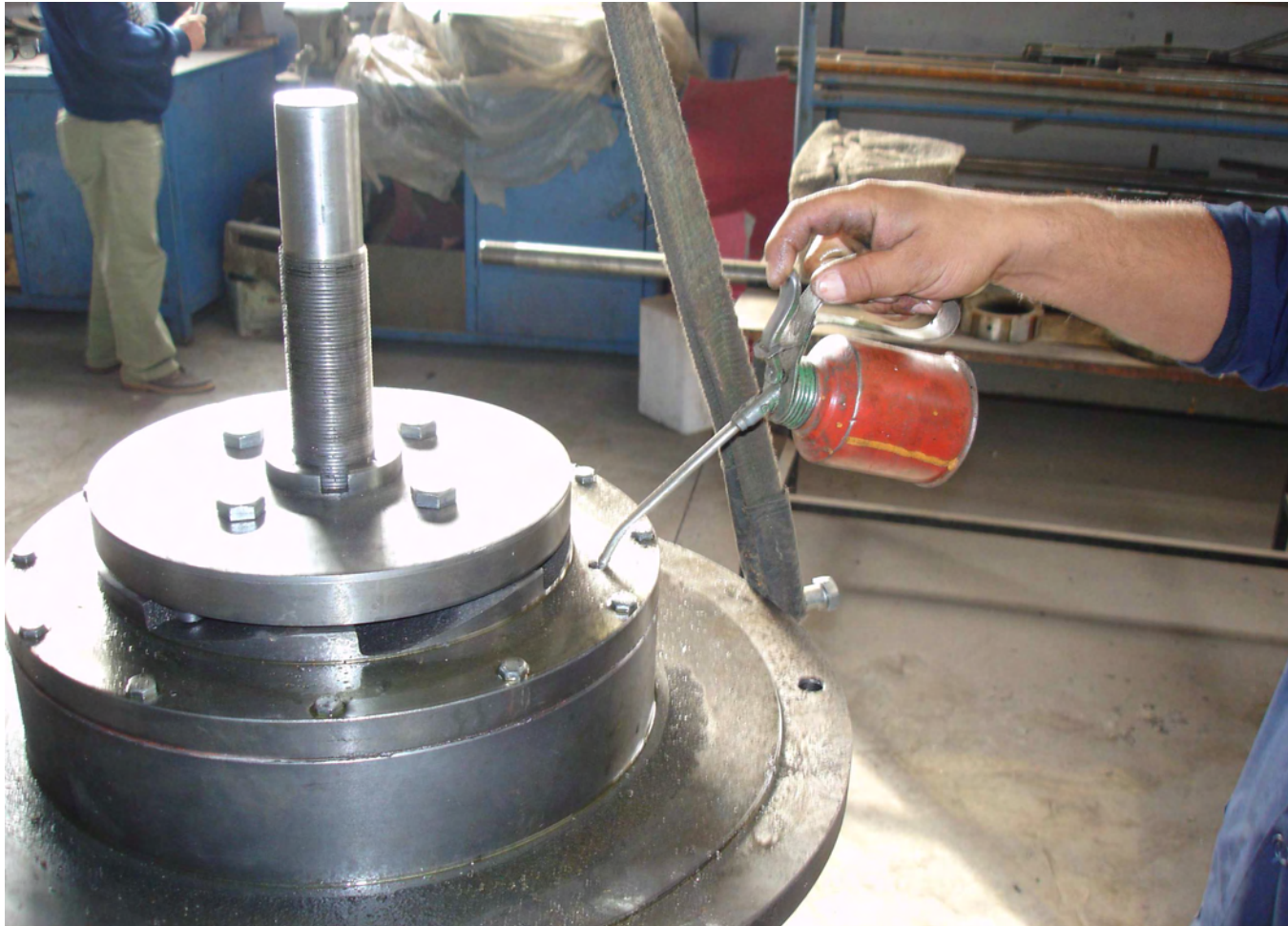
THRUST ASSEMBLY (2/10)

- After installing of the thrust assembly, remove oil plug.



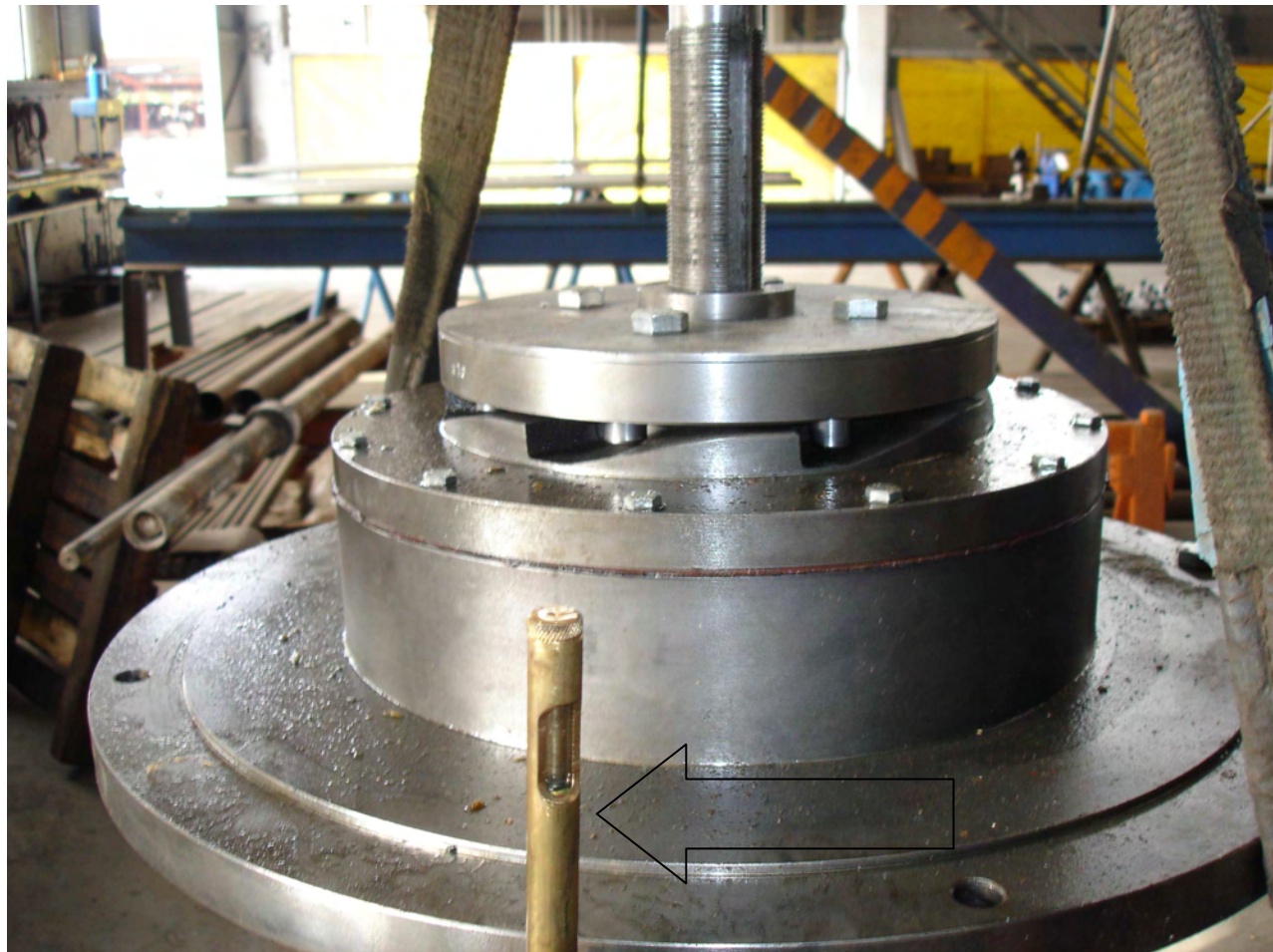
THRUST ASSEMBLY (3/10)

- Fill with the oil



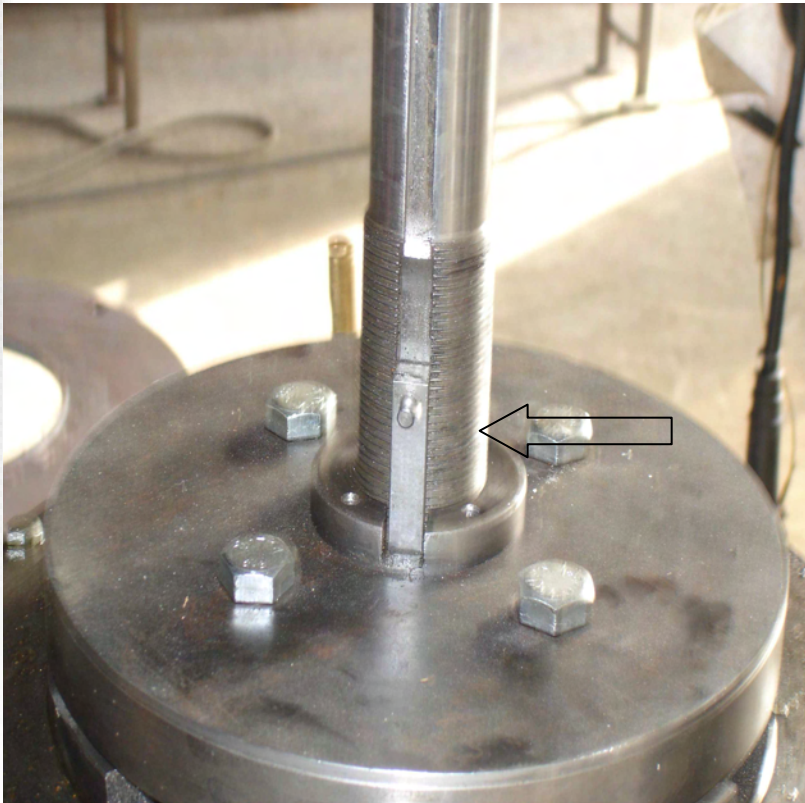
THRUST ASSEMBLY (4/10)

- Check the oil level by oil level indicator. Be sure that the oil level is not under the stated line on the indicator.



THRUST ASSEMBLY (5/10)

- Use the key and fix the thrust assembly and head shaft to each other.



THRUST ASSEMBLY (6/10)

- Screw the adjusting nut.



THRUST ASSEMBLY (7/10)

- Check the distance of adjustment nut from the top of head shaft. This value will be given by LB and provide you to fix the impeller position.



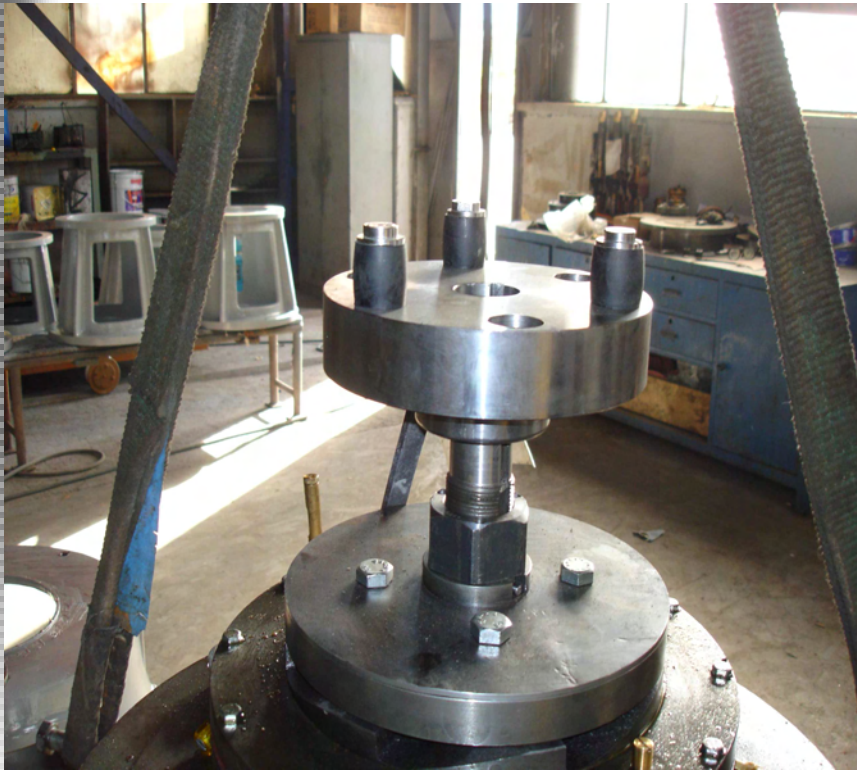
THRUST ASSEMBLY (8/10)

- After fixing the adjustment nut, screw the retaining bolt in order not to allow moving of the adjusting nut.



THRUST ASSEMBLY (9/10)

- Install head shaft coupling with key and fix it



THRUST ASSEMBLY (10/10)

- Install intermediate part.



- Put the motor over the intermediate part.

INSTALLATION IS FINISHED.