

# Sakuragawa

2014 / 2015 Price List



**Heavy Duty, Dewatering, Submersible Pumps**

# High Quality Dewatering Pumps.

Sakuragawa Pump Manufacturing Company was established in Osaka, Japan in 1953 and is now recognised as a renowned manufacturer of submersible dewatering pumps with a world wide reputation for quality construction and robust design.

With duties ranging from 100 l/min to over 12,000 l/min and heads ranging from 8m to 225m Sakuragawa is ideally placed to meet the needs of the most difficult dewatering jobs.



Applications include:

- Mine dewatering
- Drainage of pits and quarries
- Storm water drainage
- Transfer of liquids carrying sludge or sand
- General dewatering duties on building and construction sites



#### Materials:

- HCI = High Chrome Iron
- SGL = Spheroidal Graphite Iron - Ductile Iron
- CI Rubb = Cast Iron + Synthetic Rubber
- ST Rubb = Steel + Synthetic Rubber
- CI = Cast Iron
- ST = Steel
- Alu = Aluminium
- Alu Rubb = Aluminum + Synthetic Rubber

Materials listed refer to the Impeller / Casing / Suction Cover. All shafts are stainless steel. All are fitted with double mechanical seals in oil baths.

U-K Series - Contractor Pumps.....	3
US/USO/US-A Series - Portable Water Pumps .....	4
UEX Series - Automatic IT Pumps .....	6
UOX Series - Automatic Level Controlled Pumps.....	7
UOY Series - Automatic Float Switch Controlled Pumps.....	8
J Series - Stainless Steel Pumps.....	9
UC-UCF Series - Diffuser Pumps .....	10
U Series - High Pressure / High Head Pumps .....	12
U Series - High Capacity Pumps .....	14
U-W Series - Double Stage Pumps .....	15
HS-NHS Series - Sand / Slurry Pumps.....	16
SA Series - Mixers / Agitators .....	18

All prices exclude GST and are subject to change without notice. All prices are ex our warehouse and are plus freight.

## U-K Series - Contractor Pumps

For general, excavation, drainage uses etc

Extra compact, high performance and easy to operate at anytime, any place it is required! The design has reduced the risk of clogging and locking of the impeller. The number of parts is minimized and the simplicity in its design increased the common components parts, which will decrease the cost of maintenance.

Applications:

- Tunnel and caisson dewatering
- Agricultural irrigation
- Reclaiming operations, tight trenches, manholes
- Contractors and rental companies

This Sakuragawa pump is particularly good for arduous dewatering applications. All units are cast iron construction with chrome impellers and rubber lined wear plates. Very good for low head high capacity fixed installations. Fitted with hose tail outlets.

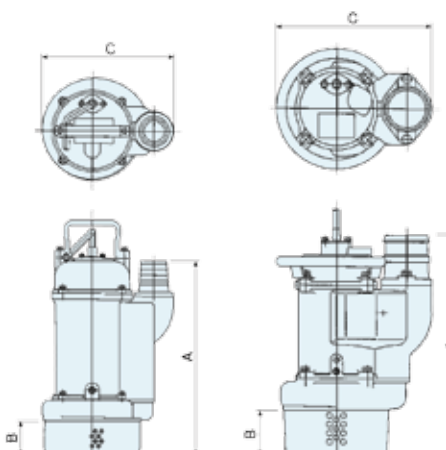
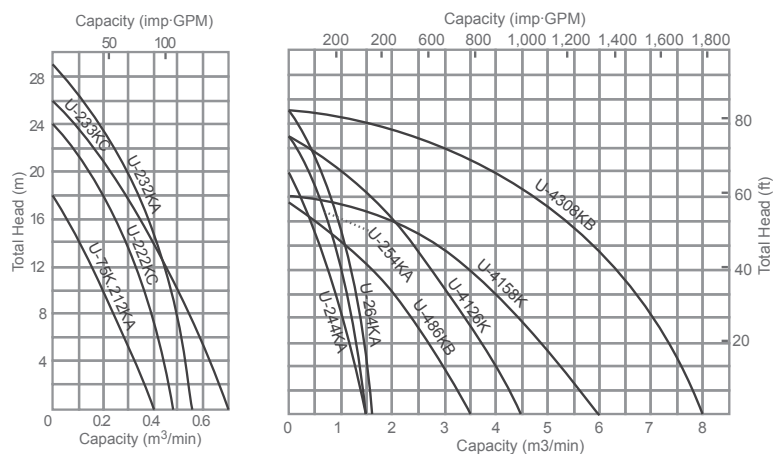
Model	Discharge Dia.		Shut Off		MAX Capacity		Materials	Motor Output		Weight kg	List Price
	mm	inch	m	ft	m <sup>3</sup> /min	L/sec		kW	V		
U-212KA	50	2	18	59	0.4	6.7	CI/CI/ST RUBBER	0.75	415	17.5	\$1,706
U-222KC	50	2	24	78	0.48	8	CI/SGI/ST RUBBER	1.5	415	27	\$2,456
U-232KA	50	2	29	95	0.55	9.1	HCI/SGI/ST RUBBER	2.2	415	32	\$3,207
U-233KC	80	3	26	85	0.7	11.7	HCI/SGI/ST RUBBER	2.2	415	32	\$2,968
U-244KA	100	4	20	65	1.5	25	HCI/SGI/ST RUBBER	3	415	46	\$4,128
U-254KA	100	4	23	75	1.5	25	HCI/SGI/ST RUBBER	3.7	415	58	\$4,742
U-264KA	100	4	25	82	1.5	25	HCI/SGI/ST RUBBER	4.5	415	58	\$4,980
U-486KB	150	6	17	55	3.5	58	SGI/CI/SGI	5.5	415	124	\$6,857
U-4126K	150	6	23	75	4.5	75	SGI/CI/SGI	9	415	180	\$9,006
U-4158K	200	8	18	59	6	100	SGI/CI/SGI	11	415	200	\$9,415
U-4308KB	200	8	25	82	8	133	SGI/CI/SGI	22	415	340	\$19,760

**Standard - Supplied with 10m power cable.**



U-222KC

U-244KA



Models	Dimensions		
	mm		
	A	B	C
U-212KA	435	64	245
U-222KC	455	73	260
U-232KA	490	73	280
U-233KC	490	73	280
U-244KA	480	98	340
U-254KA	555	98	340
U-264KA	555	98	340
U-486KB	785	150	465
U-4126K	810	150	550
U-4158K	850	166	560
U-4308KB	1,140	212	630

## US/USO/US-A Series - Portable Water Pumps

*Portable, handy and versatile with solids handling ability*

Pumping liquid by using a vortex action generated by a multi radial vane impeller. Specifically designed structure to reduce clogging.

The Sakuragawa US Series pump has a powerful vortex action which greatly reduces the risk of clogging. A proven product range for many years in both auto and manual.

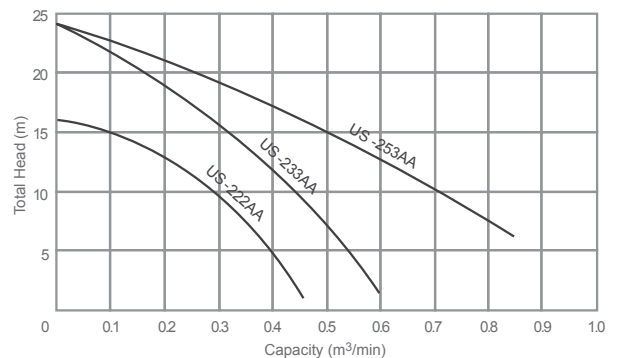
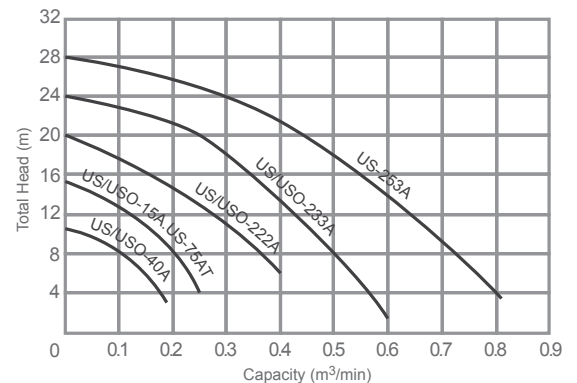
- US - basic version
- USO - automatic operation
- US-A - equipped with a mechanical agitator to create powerful stirring and pumping action for slurry. Manual operation.

Applications:

- Removal of water/slurry out of trenches, underground pits, manholes, building basements etc
- Water transportation, filtration, silt removal, sump application
- Irrigation

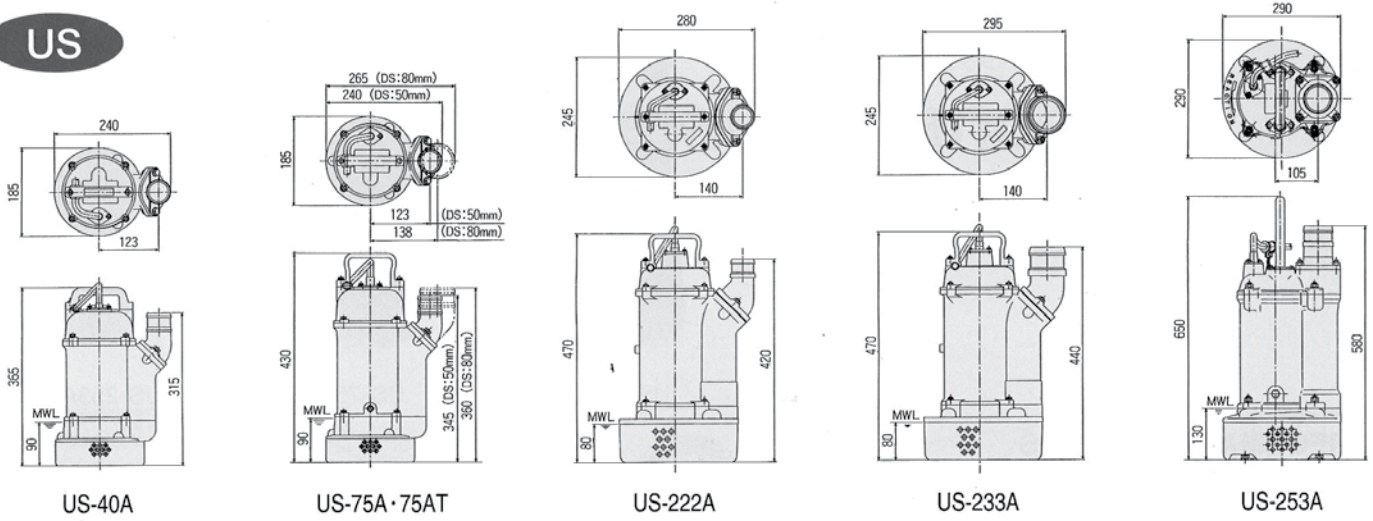
Model	Discharge Dia. mm inch	Shut Off m ft	MAX Capacity m <sup>3</sup> /min L/sec	Materials	Motor Output kW V	Weight kg	List Price
<b>MANUAL</b>							
USF-212	50/80 2/3	15 49	0.25 4.1	SGI/ST RUBBER/CI	0.75 415	19.5	\$1,076
US-222A	50/80 2/3	20 65	0.40 6.7	SGI/ST RUBBER/CI	1.5 415	19.5	\$1,979
US-233A	80 3	24 78	0.60 10	SGI/ST RUBBER/CI	2.2 415	24	\$2,286
US-253A	80/100 3/4	28 91	0.80 13.3	SGI/ST RUBBER/CI	3.7 415	38.5	\$3,821
<b>AGITATOR</b>							
US-222AA	50/80 2/3	16 52	0.45 7.5	SGI/ST RUBBER/CI	1.5 415	25	\$2,763
US-233AA	80 3	24 78	0.60 10	SGI/ST RUBBER/CI	2.2 415	29	\$3,309
US-253AA	50 2	24 78	0.85 14.1	SGI/ST RUBBER/SGI	3.7 415	45	\$6,038
<b>AUTOMATIC</b>							
USO-40A	50 2	10 32	0.18 3	SGI/ST RUBBER/CI	0.4 240	17.5	\$1,096
USO-75A	50/80 2/3	15 49	0.25 4.1	SGI/ST RUBBER/CI	0.75 240	21.5	\$1,461

**Standard - Supplied with 10m power cable except USO- 40, 75A & AT These units are supplied with 5m power cable.**

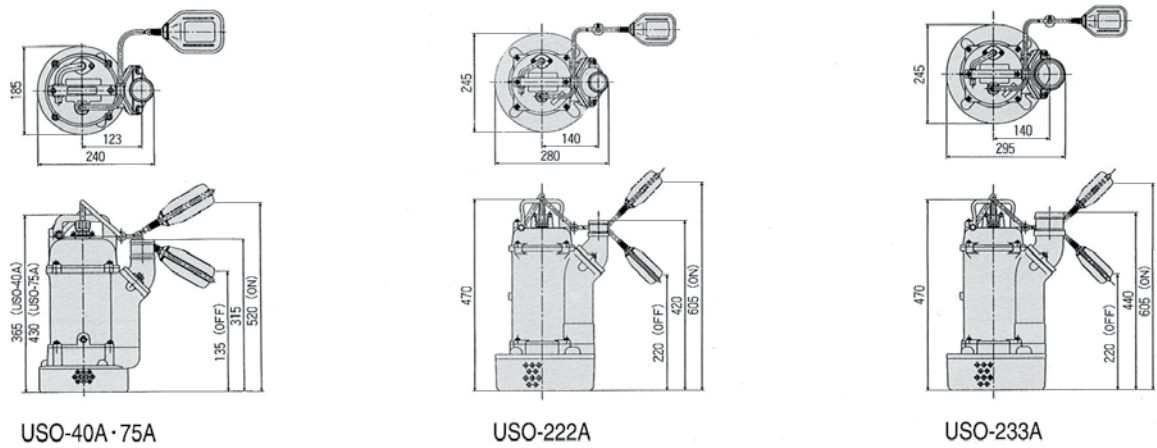


US/USO/US-A Series Continued...

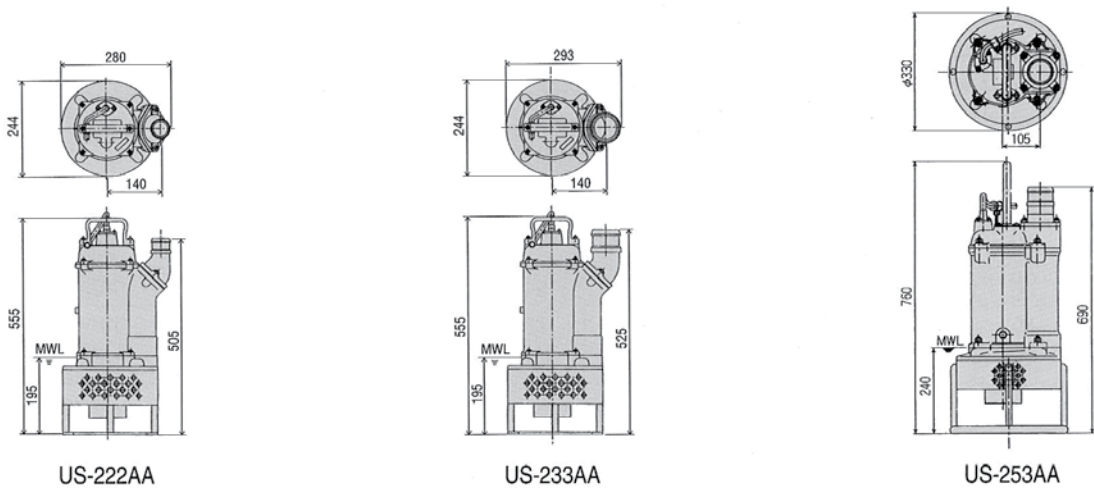
**US**



**USO**



**US-A**



## UEX Series - Automatic IT Pumps

### Energy and labour saving smart pumps

With capacitance mode sensor, UEX Series performance is highly accurate and also easily controlled for changing the water level.

The latest range from Sakuragawa, the UEX has a capacitance mode sensor for level control and single pump operation. Rubber lined plates and low chrome impellers are standard. A mixture of aluminium and cast iron in motor and casing construction. Fitted with hose tail outlets.

#### Applications:

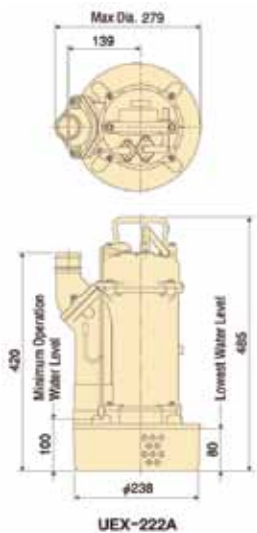
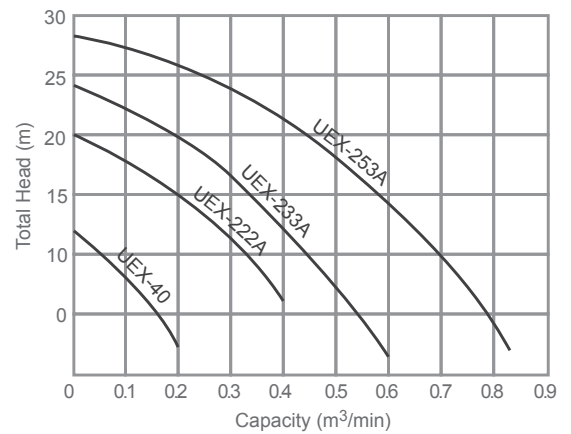
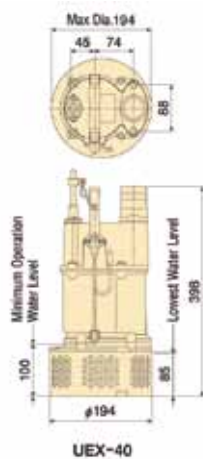
- Drainage out of underground pit, manholes etc
- Supply and dewatering works from agricultural field, factory etc
- Drainage out of spring water, stagnant water from swamp, pit etc

Model	Discharge Dia. mm	Shut Off m	ft	MAX Capacity m <sup>3</sup> /min	L/sec	Materials	Motor Output kW	V	Weight kg	List Price
UEX-40A	50	12	39	0.19	3.1	SGI/CI/ST RUBBER	0.4	240	11.5	\$1,194
UEX-222A	50	20	65	0.4	6.7	SGI/CI/ST	1.5	415	21	\$2,831
UEX-233A	80	24	78	0.6	10.0	SGI/CI/ST	2.2	415	25	\$3,104
UEX-253A	80	28	91	0.82	13.7	SGI/CI/ST	3.7	415	39	\$5,015

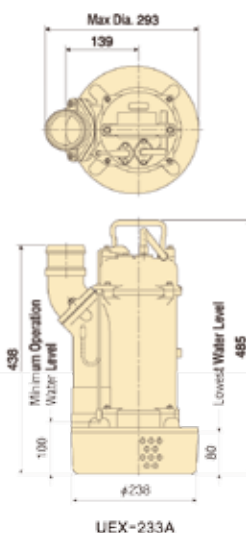
Standard - UEX -40A & 222A Supplied with 5m power cable. UEX-233A & 253A Supplied with 10m power cable.



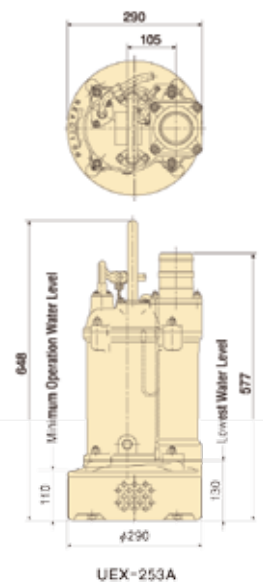
UEX-40A



UEX-233A



UEX-253A



## UOX Series - Automatic Level Controlled Pumps

### Energy and labour saving smart pumps

Automatic-operated submersible dewatering IT pumps by means of a capacitance mode sensor. The UOX Series is equipped with a micro-computer creating an energy-saving automatic alternative.

Resolve worries arising from conventional submersible pumps with float switches, such as inaccurate detection of liquid levels due to stuck or smeared switches. Safety functions in-built into the pumps that ensure long life include settings to run pumps every week to avoid locked motor, contactless semiconductor relay to avoid switching circuits, timer to retain water level detection stability, protection against consecutive dry-running, and "position-free" type sensors.

#### Applications:

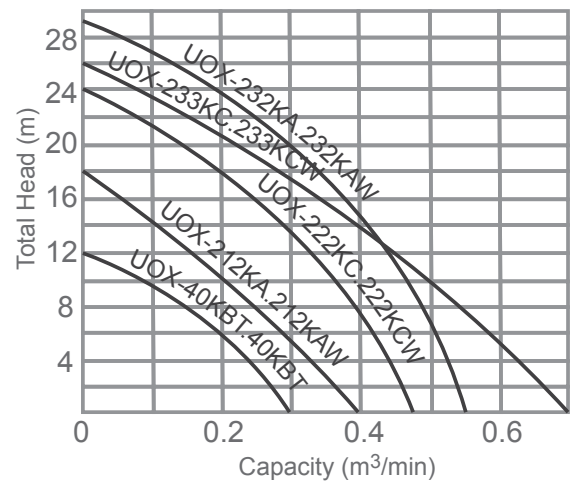
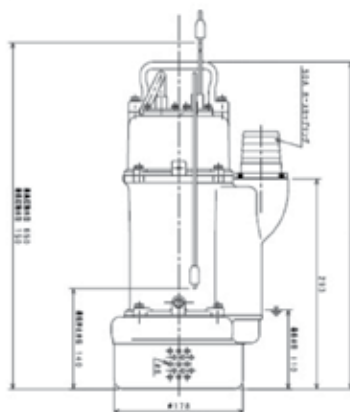
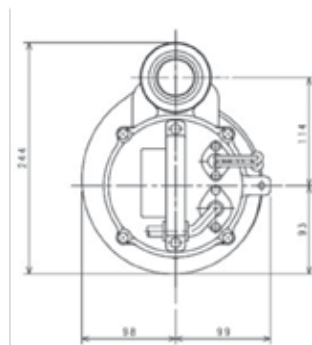
- Ideal for civil engineering and construction, contractors and rental companies
- Supply and dewatering works from agricultural field, factory etc
- Drainage out of spring water, stagnant water from swamp, pit, etc
- Automatic drainage works at purification tanks and small size water treatment plants
- Automatic drainage works from buildings, factories, etc
- Automatic drainage works at pits of manholes and underpasses
- Automatic drainage works at washing car parks

Model	Discharge Dia.		Shut Off		MAX Capacity		Materials	Motor Output		Weight	List Price
	mm	inch	m	ft	m <sup>3</sup> /min	L/sec		kW	V	kg	
UOX-40KBT	50	2	11	36	0.25	4.0	SGI/CI/ST RUBBER	0.4	415	18	\$1,979
UOX-212KA	50	2	18	59	0.40	6.7	SGI/CI/ST RUBBER	0.75	415	20	\$2,183
UOX-222KC	50	2	24	78	0.48	8.0	SGI/CI/ST RUBBER	1.5	415	28	\$2,865
UOX-232KA	50	2	29	95	0.55	9.1	SGI/CI/CI RUBBER	2.2	415	34	\$3,514
UOX-233KC	80	3	26	85	0.70	11.6	SGI/CI/ST RUBBER	2.2	415	35	\$3,104
<b>3 SENSOR PUMPS FOR 2 PUMP OPERATION</b>											
UOX-40KBTW	50	2	11	36	0.25	4.0	SGI/CI/ST RUBBER	0.4	415	18	\$2,388
UOX-212KAW	50	2	18	59	0.40	6.7	SGI/CI/ST RUBBER	0.75	415	20	\$2,593
UOX-222KCW	50	2	24	78	0.48	8.0	SGI/CI/ST RUBBER	1.5	415	28	\$3,480
UOX-232KAW	50	2	29	95	0.55	9.1	SGI/CI/CI RUBBER	2.2	415	34	\$3,821
UOX-233KCW	80	3	26	85	0.70	11.6	SGI/CI/ST RUBBER	2.2	415	35	\$3,582

**Standard - Supplied with 10m power cable, except UOX- 40KBT & KBTW These units are supplied with 5m power cable.**



UOX-40KBT



## UOY Series - Automatic Float Switch Controlled Pumps

### Energy and labour saving smart pumps

Featuring innovative automatic operations, Sakuragawa IT Pumps UOY Series are smarter than ever. Ideal for applications where the UOX Series is not suitable.

Like the UOX, safety functions in-built into the UOY Series pumps ensuring a long life include settings to run pumps every week to avoid locked motor, contactless semiconductor relay to avoid switching circuits, timer to retain water level detection stability, protection against consecutive dry-running, and "position-free" type sensors.

#### Applications:

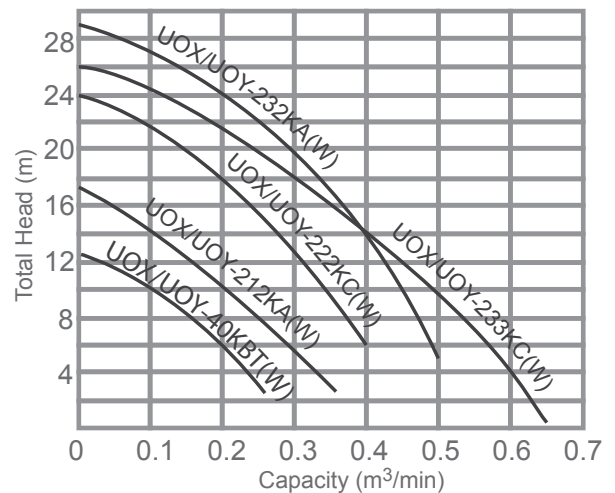
- Ideal for civil engineering and construction, contractors and rental companies
- Supply and dewatering works from agricultural field, factory etc
- Drainage out of spring water, stagnant water from swamp, pit, etc
- Automatic drainage works at purification tanks and small size water treatment plants
- Automatic drainage works from buildings, factories, etc
- Automatic drainage works at pits of manholes and underpasses
- Automatic drainage works at washing car parks

Model	Discharge Dia.		Shut Off		MAX Capacity		Materials	Motor Output		Weight kg	List Price
	mm	inch	m	ft	m <sup>3</sup> /min	L/sec		kW	V		
UOY-40	50	2	10	32	0.25	4.0	SGI/CI/ST RUBBER	0.4	415	17	\$1,433
UOY-40W	50	2	10	32	0.25	4.0	SGI/CI/ST RUBBER	0.4	415	17	\$1,535
UOY-212KA	50	2	17	55	0.35	5.8	SGI/CI/ST RUBBER	0.75	415	20	\$2,345
UOY-222KC	50	2	24	78	0.40	6.7	SGI/SGI/ST RUBBER	1.5	415	28	\$3,002
UOY-232KA	50	2	28	91	0.50	8.3	HC/CI/CI RUBBER	2.2	415	34	\$3,650
UOY-233KC	80	3	26	85	0.65	10.8	HC/CI/ST RUBBER	2.2	415	35	\$3,275
<b>3 AUTOMATIC FLOAT PUMPS FOR 2 PUMP OPERATION</b>											
UOY-212KAW	50	2	17	55	0.35	5.8	SGI/CI/ST RUBBER	0.75	415	20	\$2,695
UOY-222KCW	50	2	24	78	0.40	6.7	SGI/SGI/ST RUBBER	1.5	415	28	\$3,480

Standard - Supplied with 10m power cable, except UOY- 40 & 40W These units are supplied with 5m power cable.



UOY-212KA





## J Series - Stainless Steel Pumps

*Made for handling of corrosive liquids*

Excellent for chemical and aggressive liquid pumping also when heat resistance is required.

Every part of this Sakuragawa pump that comes in contact with liquid is made of anti-corrosive material (molybdenum stainless steel) to ensure its reliability and durability. It is excellent for chemical and heat resistance.

Applications:

- Handling corrosive liquids in food, steel, pharmaceutical and brewing industries
- Dewatering in mining, hospital, paper mills, metal plating plants and various laboratories
- Sea water transfer

Model	Discharge Dia.		Shut Off		MAX Capacity		Motor Output		Phase	Weight	List Price
	mm	inch	m	ft	m <sup>3</sup> /min	L/sec	kW	V		kg	
J-40B	50	2	11.5	37	0.23	3.8	0.4	415	1	19	\$5,492
J-40BT	50	2	11.5	37	0.23	3.8	0.4	415	3	19	\$5,492
J-212B	50	2	16.0	52	0.30	5.0	0.75	415	3	20	\$5,492
J-222A	50	2	19.0	62	0.47	7.8	1.5	415	3	37	\$12,042
J-253A	80	3	27.0	88	0.75	12.5	3.7	415	3	92	\$21,014
J-283A	80	3	33.0	108	1.20	20.0	5.5	415	3	98	\$24,014
J-2104A	100	4	38.0	124	1.50	25.0	7.5	415	3	127	\$26,437
J-2154A	100	4	44.0	144	1.60	26.5	11	415	3	137	\$29,439

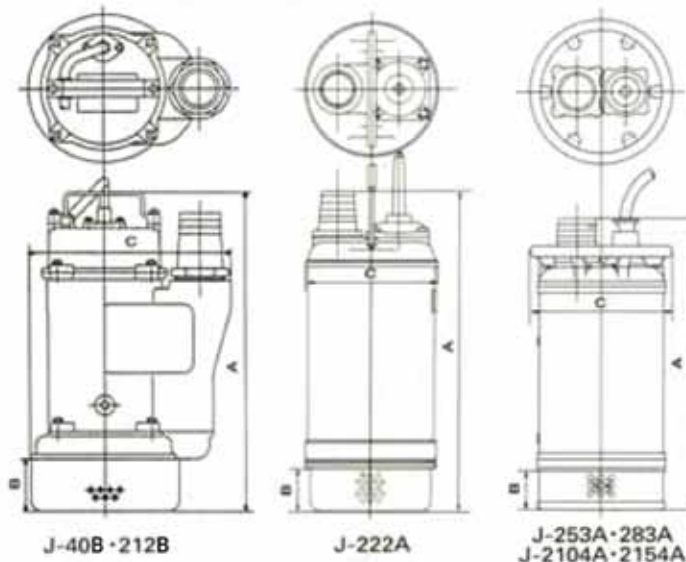
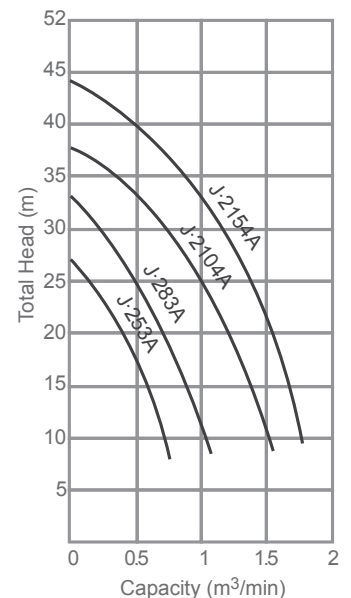
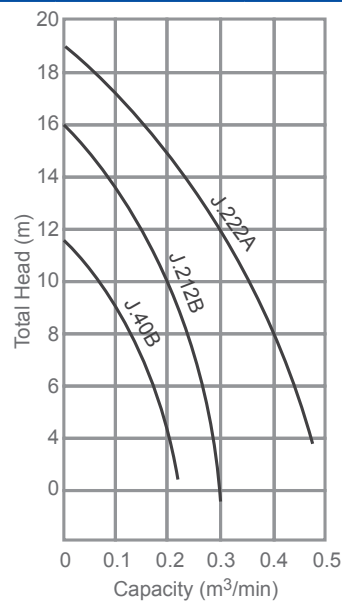
**Standard - J40 Supplied with 5m power cable. J-212 to J-283 supplied with 10m power cable. J-2104 & J-2154 supplied with 20m power cable**



J-212



J-283A



MODELS	DIMENSIONS		
	mm		
	A	B	C
J-40B	390	65	245
J-212B	390	65	245
J-222A	470	63	195
J-253A	625	87	315
J-283A	655	87	315
J-2104A	710	96	360
J-2154A	740	96	360

## UC-UCF Series - Diffuser Pumps

*Heavy duty pumps suitable for use in harsh environments*

The UC Series of Sakuragawa pumps is a light weight version manufactured from corrosion resistant aluminium alloy. The UCF Series has iron castings providing a more robust, heavy duty unit. Performance data is identical for both series.

Applications:

- Tunnel and caisson dewatering
- Narrow trenches, manholes, pit and sump dewatering
- Irrigation

Can be supplied with hose tail and flange outlets.

Model	Discharge Dia.		Shut Off		MAX Capacity		Materials	Motor Output		Weight kg	List Price
	mm	inch	m	ft	m <sup>3</sup> /min	L/sec		kW	V		
UC-252	50	2	35	114	0.65	10.8	HCI/SGI/ALU RUBB	3.7	415	51	\$6,038
UC-253	80	3	30	98	1	16.7	HCI/ST/ALU RUBB	3.7	415	49	\$5,550
UC-254	100	4	20	65	1.5	25	HCI/ST/ALU RUBB	3.7	415	49	\$5,560
UC-283	80	3	35	114	1.35	22.5	HCI/ST/ALU RUBB	5.5	415	49	\$5,936
UC-284	100	4	25	82	1.8	30	HCI/ST/ALU RUBB	5.5	415	49	\$5,936
UC-2104	100	4	41	134	1.3	21.7	HCI/SGI/ALU RUBB	7.5	415	82	\$8,767
UC-2106	150	6	18	59	3.2	53	HCI/ST/ALU RUBB	7.5	415	79	\$8,767
UC-2154	100	4	48	157	1.7	28	HCI/SGI/ALU RUBB	11	415	87	\$9,483
UC-2156	150	6	25	82	3.8	63	HCI/ST/ALU RUBB	11	415	84	\$9,483
UC-2256	150	6	42	137	4.2	70	SGI/SGI/ALU RUBB	19	415	167	\$15,999
UC-2258	200	8	35	114	5.6	93	HCI/ST/ALU RUBB	19	415	157	\$15,999
UC-2306	150	6	50	164	2.7	45	SGI/SGI/ALU RUBB	22	415	170	\$18,728
UCF-252	50	2	35	114	0.65	10.8	HCI/SGI/CI RUBB	3.7	415	89	\$6,788
UCF-253	80	3	30	98	1	16.7	HCI/ST/CI RUBB	3.7	415	82	\$6,477
UCF-254	100	4	20	65	1.5	25	HCI/ST/CI RUBB	3.7	415	84	\$6,481
UCF-283	80	3	35	114	1.35	22.5	HCI/ST/CI RUBB	5.5	415	82	\$6,823
UCF-284	100	4	25	82	1.8	30	HCI/ST/CI RUBB	5.5	415	84	\$6,652
UCF-2104	100	4	41	134	1.3	21.7	HCI/SGI/CI RUBB	7.5	415	118	\$9,722
UCF-2106	150	6	18	59	3.2	53	HCI/ST/CI RUBB	7.5	415	113	\$9,756
UCF-2154	100	4	48	157	1.7	28	HCI/SGI/CI RUBB	11	415	123	\$10,200
UCF-2156	150	6	25	82	3.8	63	HCI/ST/CI RUBB	11	415	118	\$10,234
UCF-2206	150	6	49	161	2.5	41.7	HCI/SGI/CI RUBB	15	415	139	\$12,383
UCF-2256	150	6	42	137	4.2	70	HCI/SGI/CI RUBB	19	415	231	\$16,920
UCF-2258	200	8	35	114	5.6	93	HCI/ST/CI RUBB	19	415	224	\$16,920
UCF-2306	150	6	50	164	2.7	45	HCI/SGI/CI RUBB	22	415	231	\$19,922

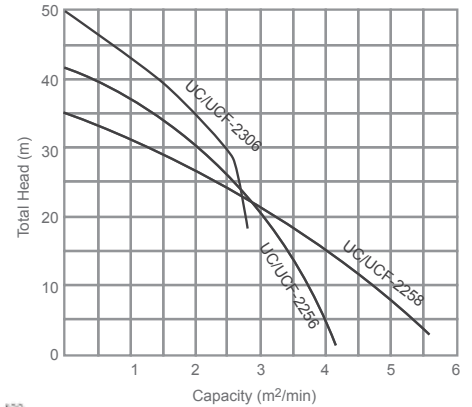
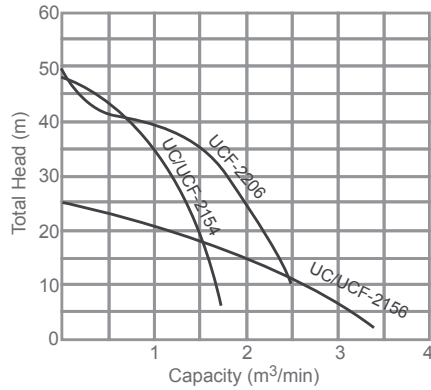
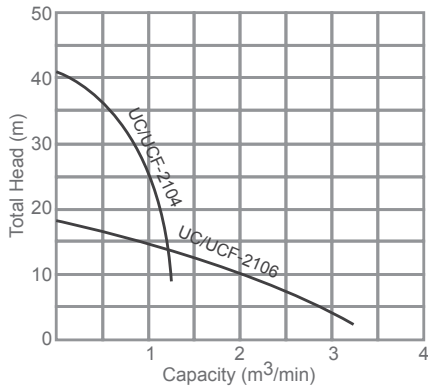
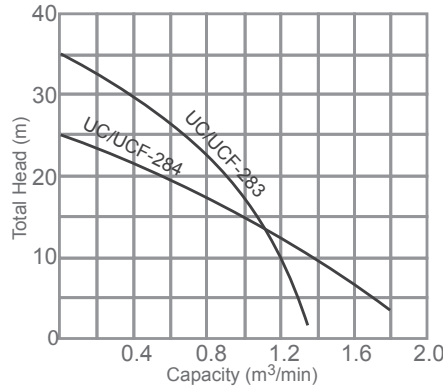
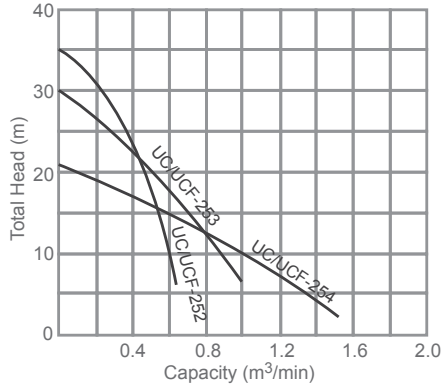
Standard - Supplied with 10m power cable.



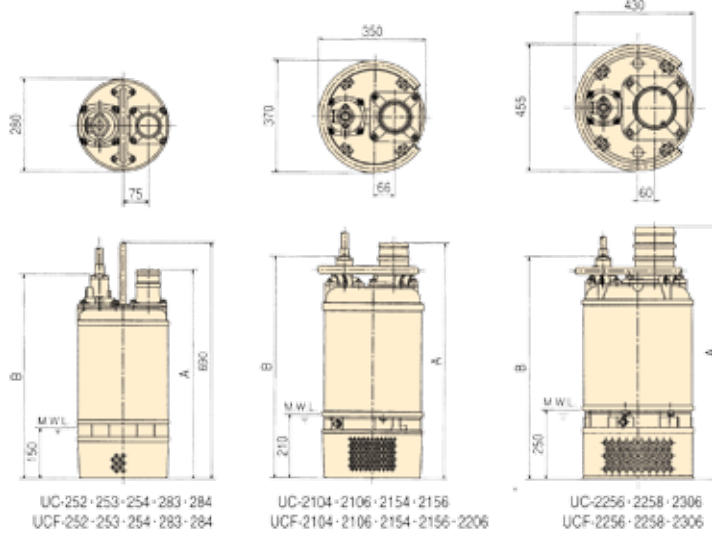
Hose Coupling

Centre Flange

**UC-UCF Series Continued...**



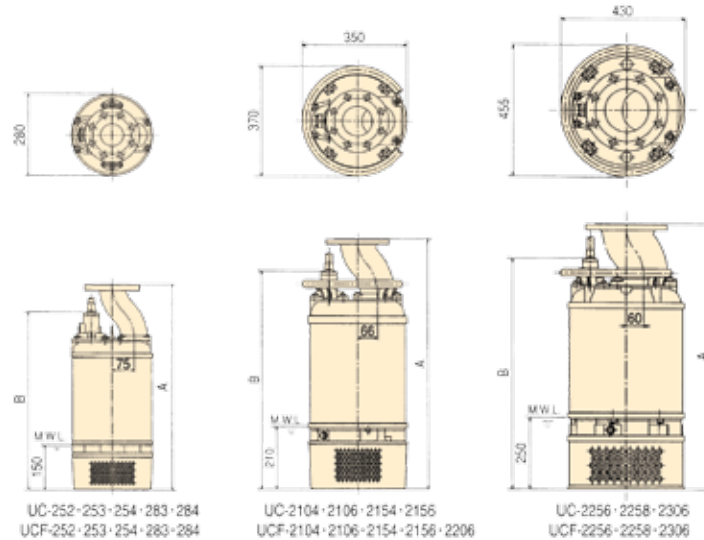
*Hose Coupling*



Model	A	B
UC/UCF-252	585	595
UC/UCF-253	610	595
UC/UCF-254	610	595
UC/UCF-283	610	595
UC/UCF-284	610	595
UC/UCF-2104	775	725
UC/UCF-2106	825	725
UC/UCF-2154	740	690
UC/UCF-2156	790	690
UCF-2206	840	740
UC/UCF-2256	900	795
UC/UCF-2258	930	795
UC/UCF-2306	900	795



*Flange Outlet*



Model	A	B
UC/UCF-252	680	595
UC/UCF-253	690	595
UC/UCF-254	700	595
UC/UCF-283	690	595
UC/UCF-284	700	595
UC/UCF-2104	835	725
UC/UCF-2106	860	725
UC/UCF-2154	800	690
UC/UCF-2156	825	690
UCF-2206	875	740
UC/UCF-2256	910	795
UC/UCF-2258	950	795
UC/UCF-2306	910	795

• No. of holes of center-flange  
 2 inch ..... 4  
 3 to 6 inches ..... 8  
 8 inch ..... 12

## U Series - High Pressure / High Head Pumps

### Powerful high pressure pumps

Submersible pumps with only a single impeller\* carry out dewatering jobs up to exceptionally high heads. Super powerful, efficient and dependable! This pump is the backbone of the Sakuragawa range.

These submersible pumps with only a single impeller\*, carry out dewatering jobs to an unbelievable higher head. Simple structure of these models ensures easy maintenance at your heavy duty worksites.

There are many different models and all incorporate "cantilever" design and have abrasion resistant materials of construction. Outer casings etc are cast iron. These Sakuragawa pumps have superior design and quality over comparable pumps on the market. In some cases, the Sakuragawa units are double the weight of opposition units.

(\* the U-22006 model has double stage impellers)

### Applications:

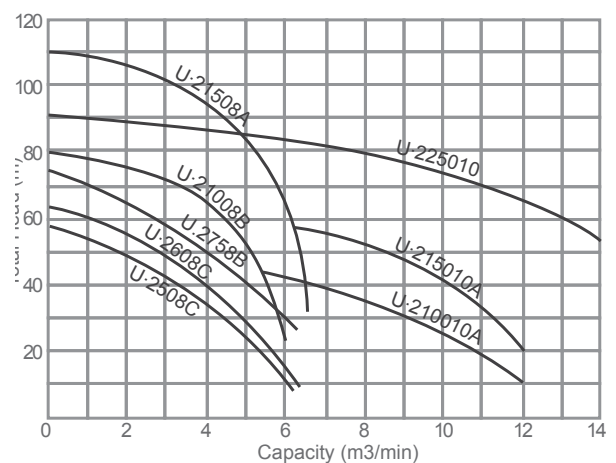
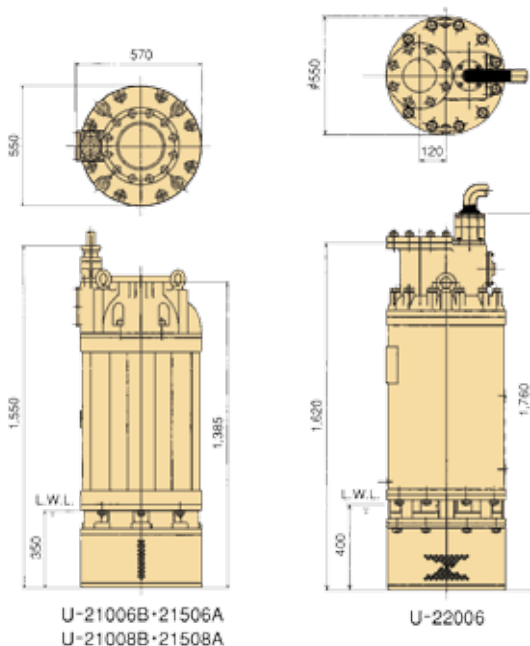
- Drainage out of sumps, pits, quarries, mining, cellars
- Tunnels, caisson dewatering, reclaiming operations, power station construction
- Waste, storm or emergency water removal, dams, harbour projects
- Contractor and rental companies

Model	Discharge Dia.		Shut Off		MAX Capacity		Materials	Motor Output		Weight kg	List Price
	mm	inch	m	ft	m <sup>3</sup> /min	L/sec		kW	V		
U-2304B	100	4	68	223	1.8	30	HCl/SGI/SGI	22	415	280	\$17,773
U-2404C	100	4	78	256	2.1	35	HCl/SGI/SGI	30	415	380	\$26,437
U-2506C (TDH 80 m)	150	6	87	285	2.3	38	HCl/SGI/SGI	37	415	485	\$34,966
U-2506C (TDH 60 m)	150	6	87	285	2.3	38	HCl/SGI/SGI	37	415	485	\$34,966
U-2606C (TDH 90 m)	150	6	97	318	2.4	40	HCl/SGI/SGI	45	415	485	\$40,083
U-2606C (TDH 75 m)	150	6	97	318	2.4	40	HCl/SGI/SGI	45	415	485	\$40,083
U-2756B	150	6	110	360	2.5	42	HCl/SGI/SGI	55	415	545	POA
U-21006B	150	6	125	410	2.6	43	HCl/SGI/SGI	75	415	980	POA
U-21506A (50Hz)	150	6	155	508	3.0	50	HCl/SGI/SGI	110	415	1,080	POA
U-2508C	200	8	58	190	6.1	102	HCl/SGI/CI	37	415	510	POA
U-2608C	200	8	62	203	6.2	103	HCl/SGI/CI	45	415	510	POA
U-2758B	200	8	73	239	6	100	HCl/SGI/SGI	55	415	560	POA
U-21008B	200	8	80	262	6	100	HCl/SGI/SGI	75	415	980	POA

Standard - Supplied with 20m power cable.



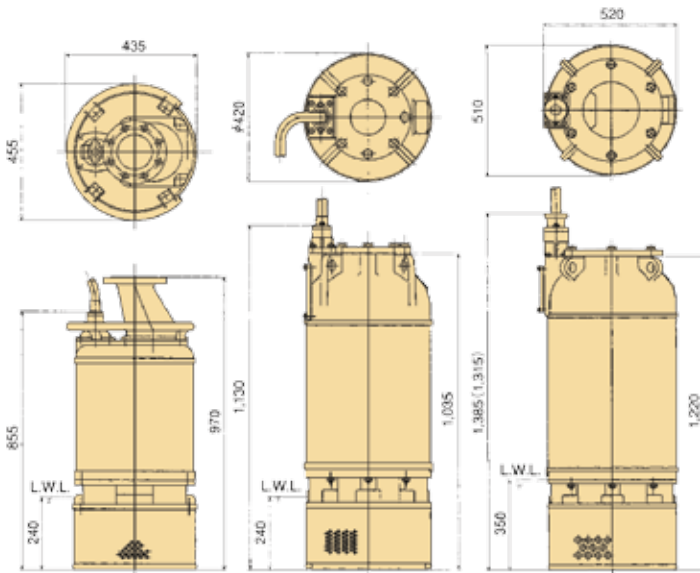
U Series



*U Series High Head Continued...*



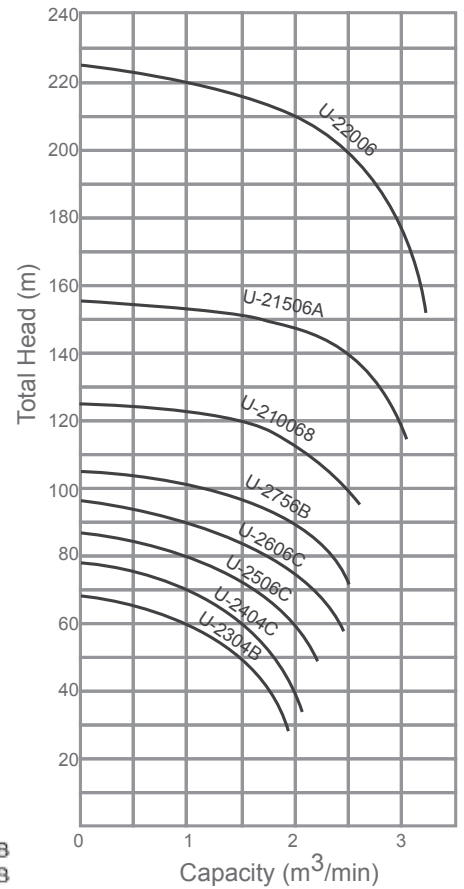
U-2506C



U-2304B

U-2404C

U-2506C•2606C•2756B  
U-2508C•2608C•2758B



**Check out our website for all your submersible pump requirements**

**[www.brownbros.com.au](http://www.brownbros.com.au)**



## U Series - High Capacity Pumps

### Heavy duty pumps for major dewatering jobs

Designed for major dewatering jobs, particularly when bigger volumes of water are required.

The Sakuragawa U Series High Capacity submersible pumps are powerful, efficient and dependable. They are designed to be used for major dewatering jobs, particularly when bigger volumes of water are required to be handled. They have extremely high capacity and are excellent in heavy-duty orientated conditions.

#### Applications:

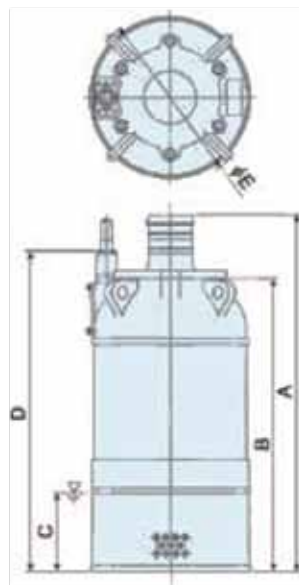
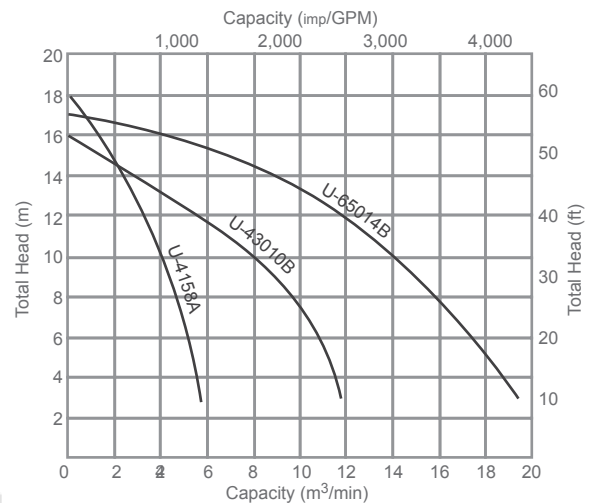
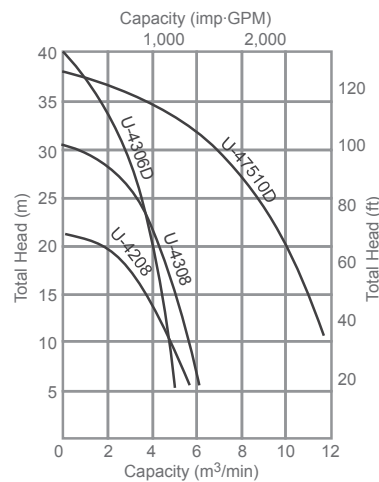
- Sump drainage
- Pit, quarry, mining, cellar, dam, harbour and agricultural irrigation projects
- Tunnel, caisson dewatering
- Reclamation operation
- Power station construction
- Waste, storm or emergency water removal
- Contractors and rental companies

Model	Discharge Dia.		Shut Off		MAX Capacity		Materials	Motor Output		Weight kg	List Price
	mm	inch	m	ft	m <sup>3</sup> /min	L/sec		kW	V		
U-4158A	200	8	18	59	5.2	86	HCI/SGI/CI	11	415	177	\$9,483
U-4208	200	8	21	68	6.0	100	HCI/SGI/HCI	15	415	277	\$12,247
U-4306D	150	6	40	131	4.0	66	HCI/CI/HCI	22	415	365	\$21,014
U-4308(TDH 22M)	200	8	30	98	6.1	101	HCI/CI/HCI	22	415	440	\$20,229
U-4308(TDH 15M)	200	8	30	98	6.1	101	HCI/CI/HCI	22	415	440	\$22,924
U-43010B	250	10	16	52	11.8	196	HCI/CI/HCI	22	415	355	\$22,924
U-65014B	350	14	17	55	19.0	315	HCI/CI/HCI	37	415	700	POA
U-47510D	250	10	38	125	11.7	194	HCI/SGI/HCI	55	415	730	POA

Standard - Supplied with 10m power cable. Except for the U-47510D:- supplied with 20m power cable.



U-43010D



C : Minimum Water Level

Models	Dimensions (mm)				
	A	B	C	D	E
U-4158A	940	—	250	805	455
U-4208	975	—	250	805	455
U-4306D	1,130	—	250	1,015	540
U-4308	1,158	—	250	1,015	540
U-43010B	—	1,000	350	1,085	540
U-65014B	—	1,310	400	1,475	670
U-47510D	—	1,270	350	1,435	670

## U-W Series - Double Stage Pumps

*Portable and slim-bodied with high delivery heads*

Slim bodied, portable, heavy duty, tube well type dewatering pump. The double stage structure of the new design has realised a super high delivery head against limited discharge capacity. Perfectly circular cylindrical body means it can be placed in confined spaces. Discharge point is located at the center of the body, stabilizing the unit and making it suitable for tube-well construction.

Applications:

- Deep well civil engineering and construction services
- Pump pits including basements, underpass, narrow trenches and manholes
- Contractors and rental companies

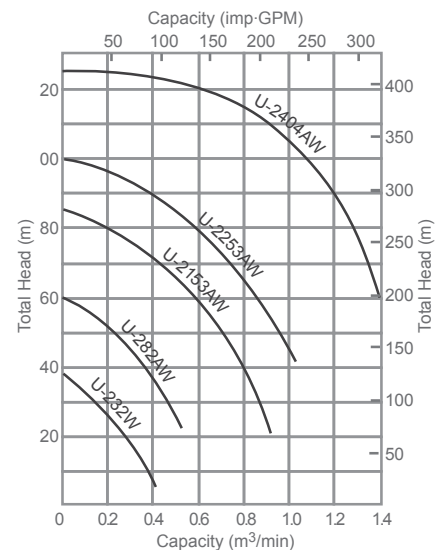
Model	Discharge Dia.		Shut Off		MAX Capacity		Materials	Motor Output		Weight kg	List Price
	mm	inch	m	ft	m <sup>3</sup> /min	L/sec		kW	V		
U-232W (TDH 26m)	50	2	38	124	0.4	6.7	SGI/SGI/SGI	2.2	415	45	\$5,936
U-232W (TDH 30m)	50	2	38	124	0.4	6.7	HCI/CI/CI	2.2	415	45	\$5,936
U-282AW	50	2	60	196	0.5	8.3	HCI/CI/CI	5.5	415	100	\$8,767
U-2153AW	80	3	85	278	0.9	15	HCI/SGI/SGI	11	415	145	\$12,972
U-2253AW	80	3	100	328	1	16.7	HCI/SGI/CI	19	415	260	\$28,825
U-2404AW	100	4	125	410	1.4	23.3	HCI/SGI/SGI	30	415	425	\$37,592

Standard - U-232W Supplied with 10m power cable. U-282W Supplied with 15m power cable. U-2153AW, U-2253AW & U-2404AW Each supplied with 20m power cable.



U-2153AW

U-232W

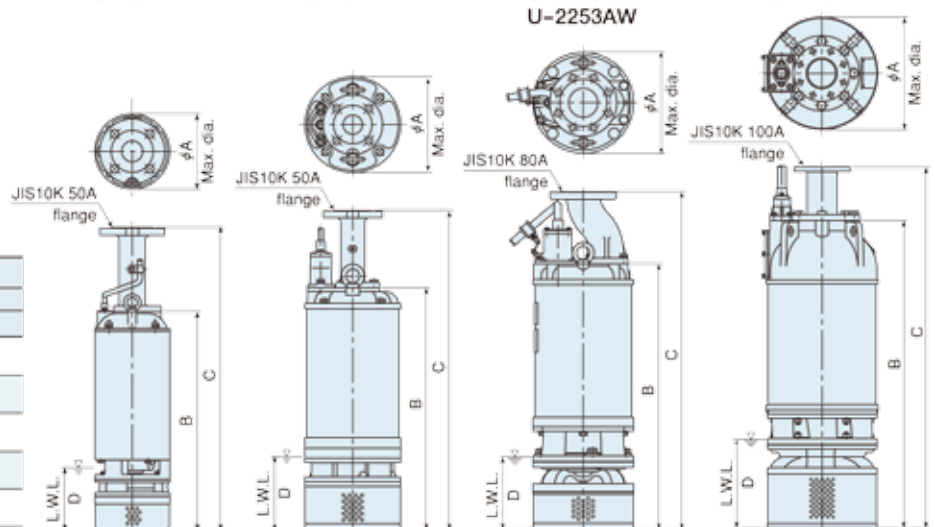


U-232W

U-282AW

U-2153AW  
U-2253AW

U-2404AW



Models	Dimensions mm			
	A	B	C	D
U-232W	180	522	722	150
U-282AW	250	629	830	190
U-2153AW	280	731	931	200
U-2253AW	330	960	1,160	240
U-2404AW	420	1,146	1,346	330

\*L.W.L. : Lowest Water Level

## HS-NHS Series - Sand / Slurry Pumps

*For heavy duty dewatering duties, including mining and sand pumping*

The submersible sludge pump (with agitator) is designed and manufactured to be suitable for demanding conditions.

The Sakuragawa submersible sludge pump is suitable for dredging and transporting sand, ballast, gravel, sludge or slurry contained in water in demanding conditions such as dams, power stations, harbour projects or tunnelling works etc.

Fitted with an agitator, these models are designed to stir up mud and sand at the bottom and then discharge the water, mud and sand in suspension more effectively.

Applications:

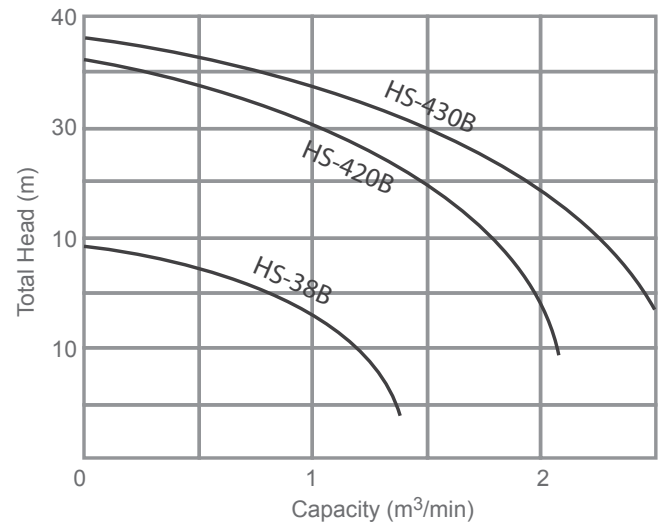
- Dredging and transporting sand, ballast, gravel, sludge and slurry contained in water
- For heavy duty applications such as in dams, power stations, harbour projects or tunnelling works etc

Model	Discharge Dia.		Shut Off		MAX Capacity		Materials	Motor Output		Weight	List Price
	mm	inch	m	ft	m <sup>3</sup> /min	L/sec		kW	V	kg	
<b>HS SERIES</b>											
HS-35A	80	3	14	46	1.5	25.0	HCl/SGI/CI/HCl	3.7	415	110	\$6,311
HS-38B	80	3	19	62	1.4	23.3	HCl/SGI/CI/HCl	5.5	415	119	\$7,539
HS-48E	100	4	16	52	2.2	36.5	HCl/SGI/CI/HCl	5.5	415	119	\$6,584
HS-610	150	6	15	49	2.6	43.0	HCl/SGI/CI/HCl	7.5	415	200	\$9,517
HS-615C	150	6	20	65	4.0	66.7	HCl/SGI/CI/HCl	11	415	240	\$11,257
HS-420B	100	4	36	118	2.2	36.5	HCl/SGI/CI/HCl	15	415	350	\$22,753
HS-430B	100	4	42	138	2.8	46.4	HCl/SGI/CI/HCl	22	415	420	\$31,316
HS-830B	200	8	23	75	6.0	100.0	HCl/SGI/CI/HCl	22	415	355	\$23,947
<b>NHS SERIES</b>											
NHS-415A-J	100	4	22	72	3.1	51.7	HCl/SGI/SGI/HCl	11	415	265	POA
NHS-415A-JC	100	4	22	72	3.1	51.7	HCl/SGI/SGI/HC	11	415	310	POA
NHS-630H	150	6	31	101	5.0	83.3	HCl/SGI/SGI/HC	22	415	430	POA
NHS-630H-C	150	6	31	101	5.0	83.3	HCl/SGI/SGI/HC	22	415	535	POA
NHS-630A-J	150	6	20	65	6.0	100.0	HCl/SGI/SGI/HC	22	415	620	POA
NHS-630A-JC	150	6	20	65	6.0	100.0	HCl/SGI/SGI/HC	22	415	710	POA
NHS-650A-J	150	6	30	98	7.2	120.0	HCl/SGI/HCl/HC	37	415	785	POA
NHS-650A-JC	150	6	30	98	7.2	120.0	HCl/SGI/HCl/HC	37	415	930	POA
NHS-850A-J	200	8	25	82	10.5	175.0	HCl/SGI/HCl/HC	37	415	815	POA
NHS-850A-JC	200	8	25	82	10.5	175.0	HCl/SGI/HCl/HC	37	415	975	POA
NHS-675J	150	6	36	118	6.8	113.3	HCl/SGI/HCl/HC	55	415	870	POA
NHS-675JC	150	6	36	118	6.8	113.3	HCl/SGI/HCl/HC	55	415	985	POA
NHS-875J	200	8	30	98	10.7	178.0	HCl/SGI/HCl/HC	55	415	915	POA
NHS-875JC	200	8	30	98	10.7	178.0	HCl/SGI/HCl/HC	55	415	1,075	POA
NHS-8100J	200	8	41	134	10.5	175.0	HCl/SGI/HCl/HC	75	415	2,200	POA
NHS-8100JC	200	8	41	134	10.5	175.0	HCl/SGI/HCl/HC	75	415	2,360	POA
NHS-10100J	250	10	28	92	16.0	267.0	HCl/SGI/HCl/HC	75	415	2,700	POA
NHS-10100JC	250	10	28	92	16.0	267.0	HCl/SGI/HCl/HC	75	415	2,900	POA

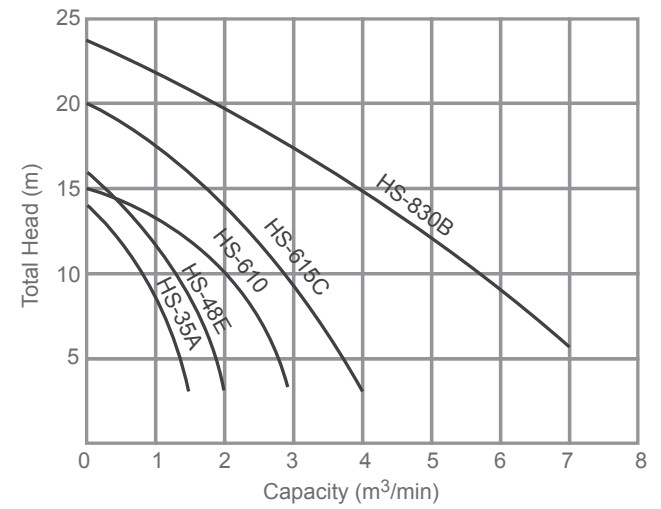
**Standard - Supplied with 10m power cable. Except for the HS-420B & 430B Supplied with 15m power cable. NHS models are ex-Japan.**



HS-NHS Series Continued...



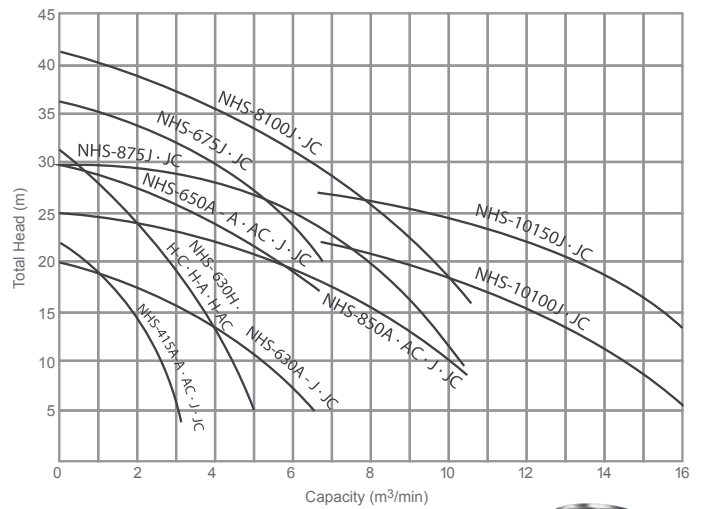
HS-615C



NHS-C



NHS-650AA



Need a high capacity pump of 10-90m³/min? The Sakuragawa H Series for high heads (4.5-11.5m) or G Series for lower head (2.5-4.1m) may be for you. Designed to handle high rates of water flow at low delivery heads. Contact us for more information.

## SA Series - Mixers / Agitators

### For stirring and mixing liquids

This range of submersible agitators is for stirring/mixing liquids and can be fixed or guide rail mounted.

Sakuragawa submersible agitators have great potential for use in various industry applications. High efficiency in stirring and mixing liquid. Able to cope with handling liquids of high specific gravity and high viscosity.

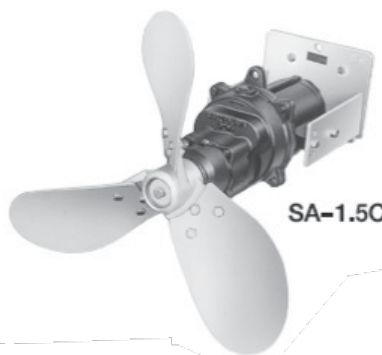
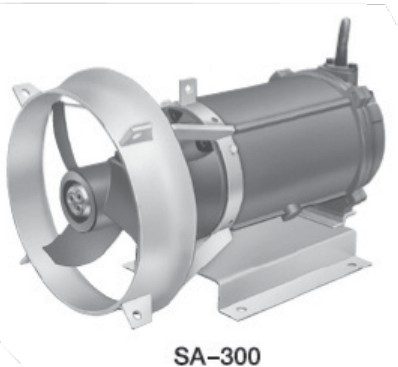
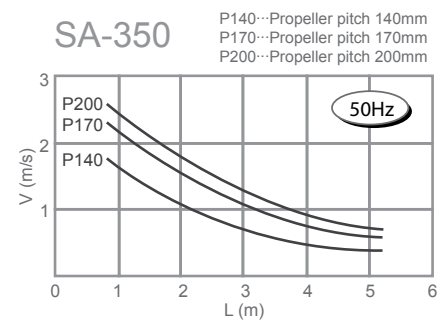
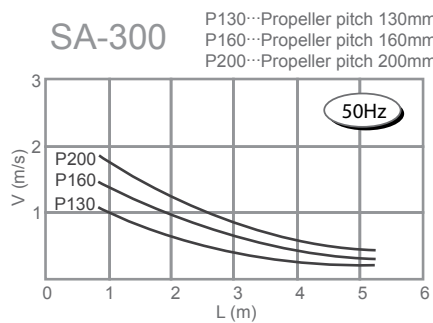
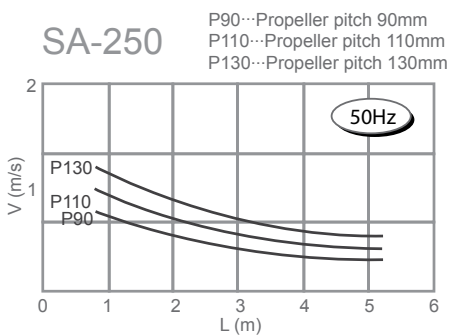
This unit is mounted on a guide bar, flexible to be raised and lowered, operated at different depths, angled upwards and downwards, and swivelled to the sides. Simple in installation and maintenance.

Applications:

- Factory drainage water treatment systems
- Water supply and sewage water treatment plants
- Farming and agriculture
- Marine products industry
- Rivers, civil engineering and public works

Model	Propeller Pitch mm	Flow Speed at Guide ring m/s	Capacity m <sup>3</sup> /min	Motor Output kW	V	Force N	Weight kg	List Price
SA-075A	90/110/130	0.93/1.11/1.32	2.8/3.4/4.0	0.75	415	44/62/88	35	\$5,765
SA-250	90/110/130	0.93/1.11/1.32	2.8/3.4/4.0	1.2	415	44/62/88	34	\$9,074
SA-300	130/160/200	1.41/1.72/2.02	6.2/7.5/8.8	3.3	415	145/220/300	80	\$12,895
SA-350	140/170/200	1.54/1.92/2.22	8.4/10.5/12.1	5.5	415	215/335/450	94	\$15,044
SA-400	200			5.5	415		97	\$17,056
SA-0.75C	1010/850			0.75	415		61	\$8,767
SA-0.75D	1010/850			0.75	415		61	\$9,108
SA-1.5C	1010			1.5	415		77	\$9,825
SA-1.5D	1010			1.5	415		77	\$10,200
SA-250V	90/110/130	0.93/1.11/1.32	2.8/3.4/4.0	1.2	415	44/62/88	34	\$10,063
SA-300V	130/160/200	1.41/1.72/2.02	6.2/7.5/8.8	3.3	415	145/220/300	80	\$14,123
SA-350V	140/170/200	1.54/1.92/2.22	8.4/10.5/12.1	5.5	415	215/335/450	94	\$16,238
SA-400V	200			5.5	415		97	\$18,250

Standard - Supplied with 10m power cable. All models are ex-Japan.



## Terms and Conditions of Trade

August 2013 Version

To the fullest extent legally possible all contracts, dealings and/or arrangements made between Brown Brothers Engineers Australia Pty Ltd ACN 064 496 813 and each of its subsidiaries, affiliates, associated companies and related entities ("BBEA") and any customer ("Customer") relating to any goods, services or transactions are subject to the following Terms and Conditions of Trade ("Terms") unless otherwise agreed in writing.

### 1. Payments and Interest:

- (a) Payment is to be by cash, cheque, or electronic funds transfer without set-off or deduction of any kind, within 30 days from the end of month of invoice date.
- (b) BBEA may apply a payment received from the Customer to any amounts owed by the Customer (including interest, part payment of an invoice, administration, collection and other costs) in any order.
- (c) BBEA is entitled to set-off or deduct any amount payable by BBEA (or any of its subsidiaries, affiliates, associated companies and related entities) to the Customer.
- (d) A payment dishonour fee may be charged by BBEA if a Customer's payment is dishonoured in any way.
- (e) Interest is payable on overdue accounts at a rate prescribed under the Penalty Interest Rates Act 1983 (Vic) plus an additional 3% calculated monthly in advance.
- (f) Before supplying the Customer with goods or services, BBEA may at BBEA's discretion require all or any of the following:
  - (i) payment in advance;
  - (ii) a guarantee of payment;
  - (iii) a deposit;
  - (iv) progress payment; or
  - (v) a letter of credit.

### 2. Property:

- (a) Property in goods will not pass until payment in full of all monies owed to BBEA on any basis ("Full Payment").
- (b) BBEA reserves the right to take possession and dispose of goods as it sees fit at any time until Full Payment and the Customer grants permission to BBEA to enter any property (whether owned by it or otherwise) where any goods are, in order to do so and with such force as is necessary.
- (c) Immediately upon delivery the Customer accepts liability for the goods.
- (d) A document signed by an officer of BBEA identifying goods and certifying that monies are owing to BBEA will be conclusive evidence of BBEA's title thereto.
- (e) Upon sale or disposition of goods prior to Full Payment the Customer agrees to hold all proceeds Upon Trust for BBEA in a separate bank account, agrees not to mix proceeds with any other monies and will immediately account to BBEA therefore even if BBEA may have granted any credit facility and/or time to pay. Failure by the Customer to comply with this subclause does not render invalid the trust to be established under this subclause.
- (f) Until Full Payment the Customer agrees:
  - (i) to keep all goods as fiduciary for BBEA and to store them in a manner which:
    - A. shows BBEA as owner; and
    - B. will keep them safe and free from deterioration, destruction, loss or harm.
  - (ii) only to sell goods in the usual course of business; and
  - (iii) sale on terms, at cost or less than cost will not be "in the usual course".
- (g) Clause 2 is not intended to create a charge and must be read down to the extent necessary to avoid being a charge.
- (h) If the Customer uses or incorporates any goods in any production, process or manufacture or combines them with anything to create a finished or combined new thing for disposition then upon such disposition prior to Full Payment, the Customer agrees to hold such part of the proceeds thereof (and until payment is received by the Customer, that part of any applicable book debt) as equals the costs of the goods used and/or incorporated therein (at the prices invoiced by BBEA to the Customer) Upon Trust for BBEA until Full Payment.

### 3. Claims:

- To the extent permissible at law (including under the Australian Consumer Law):
- (a) BBEA will not be liable for any claim arising after 7 days from delivery of goods or performance of services (or at all once goods have been unpacked, modified, on-sold or otherwise used or applied) after which there will be deemed to be unqualified acceptance;
  - (b) BBEA will not be liable in any way for any contingent, consequential, direct, indirect, special or punitive damage arising whether due to BBEA's negligence or otherwise and the Customer acknowledges this limit of liability and agrees to limit any claim accordingly;
  - (c) no other term, condition, agreement, warranty, representation or understanding whether express or implied in any way extending to or otherwise relating to or binding upon BBEA is made or given; and
  - (d) BBEA will not be liable for any claim relating to or arising from any alleged fault or defect, whether caused or contributed to by BBEA, the Customer or any third party or otherwise.

### 4. Returns:

- To the extent permissible at law (including under the Australian Consumer Law):
- (a) if BBEA elects to take back product it must be in as new and saleable condition and upon terms agreed and a re-stocking fee of \$50 or 15% of invoice value (whichever is the greater) will apply in order to cover refurbishing, repacking and accounting and administration;
  - (b) custom made or custom processed goods or goods acquired by BBEA specifically for the Customer will not be returnable;
  - (c) any goods which are accepted by BBEA as defective may be returned and will be repaired, replaced or a refund provided in accordance with clause 41(b); and
  - (d) the Customer must when returning goods, provide BBEA with a full description of conditions under which the alleged failure occurred and why the goods are alleged to be defective.

### 5. Placement of Orders:

- (a) If any dispute arises concerning any order (and including any measurement, quality, quantity, identity, or authority or any telephone, facsimile, e-mail or computer generated order) the internal records of BBEA will be conclusive evidence of what was ordered.
- (b) Each order placed will be and be deemed to be a representation made by the Customer at the time that it is solvent and able to pay all of its debts as and when they fall due.
- (c) Failure to pay in accordance with these Terms will be and be deemed to be conclusive evidence that the Customer had no reasonable grounds for making the representation referred to in 5(b) and that the representations were unconscionable, misleading and deceptive.
- (d) When any order is placed, the Customer must inform BBEA of any material facts which would or might reasonably affect the commercial decision by BBEA to accept the order and/or grant credit in relation thereto. Any failure to do so will create and be deemed to create an inequality of bargaining position and will constitute and be deemed to constitute the taking of an unfair advantage of BBEA and to be unconscionable, misleading and deceptive.

### 6. Delivery:

- (a) BBEA accepts no responsibility for delivery but may elect to arrange delivery at its discretion and without any liability and at the Customer's costs and responsibility in all things.
- (b) BBEA reserves the right to charge for any delivery.
- (c) The Customer will be deemed to have accepted delivery and liability for the goods immediately BBEA notifies that they are ready for collection or when they are delivered to a carrier or to the Customer's business premises or site whether attended or not.
- (d) A document (including without limitation a consignment note) purporting to be signed by an officer of BBEA confirming delivery will be conclusive evidence of delivery as will any signed delivery docket.
- (e) BBEA will not be liable for delay, failure or inability to deliver any goods.
- (f) Once the Customer has been notified that goods are ready for collection, the Customer agrees to pay all costs of holding or handling goods.
- (g) The Customer agrees to pay all costs and expenses arising from frustrated or delays in delivery.
- (h) The Customer agrees that BBEA may invoice the Customer for goods that are ready for delivery, notwithstanding that the Customer may have requested BBEA to delay delivery;
- (i) BBEA may unilaterally delay, cancel or suspend any delivery for any period or cancel any agreement for sale without any liability to any party.

### 7. Variation:

Variation or cancellation of any order, dealing or arrangement must be agreed in writing by BBEA.

### 8. Exclusions:

To the extent permissible at law (including under the Australian Consumer Law):

- (a) no dealing with the Customer will be or be deemed to be a sale by sample or description;
- (b) if BBEA publishes material about its goods and prices, any part which is incompatible with these Terms is expressly excluded;
- (c) the Customer will rely on its own knowledge and expertise in choosing any product for any purpose; and
- (d) any advice or assistance given for or on behalf of BBEA must be accepted at the Customer's risk and must not be or be deemed given as expert or adviser nor to have been relied upon.

### 9. On-Sale:

The Customer agrees that upon on-sale of any goods to inform any third party involved of these Terms and in particular the provisions of clause 2 and especially clause 2(h).

### 10. Severability:

As far as is possible these Terms are to be construed so as not to be void, voidable, unenforceable or illegal, but if any part of these Terms is void, voidable, unenforceable or illegal by operation of any law, then the offending part of these Terms as far as is possible is to be read down to the extent necessary to make sure that it is not invalid, unenforceable or illegal but if it cannot be so read down then it is to be deemed severed without affecting the remainder of these Terms which will continue to apply as amended.

### 11. Purchase Price:

- (a) All sales are made by BBEA at its ruling price at the time of delivery.
- (b) All Government imposts and any GST ("Imposts") will be to the Customer's account.
- (c) BBEA's price lists exclude Imposts unless expressly noted thereon.

### 12. Default:

To the extent permissible at law (including under the Australian Consumer Law):

- (a) default or breach by the Customer of these Terms or in any dealings with BBEA will entitle BBEA to retain all monies paid, call-up all monies due or owing (whether currently due and owing or not), cease further deliveries, recover from the Customer all loss of profits and/or take immediate possession of any product, without prejudice to any other of its rights and without liability to any party;
- (b) the Customer agrees not to commence or continue or permit to be commenced or continued any action against BBEA whilst the Customer is in default under any part of these Terms; and

(c) if the Customer on-sells any product, the Customer agrees to pay to a stakeholder nominated by BBEA, the cost price incurred or payable by BBEA for the acquisition of the product for supply to the Customer (estimated at 75% of the amount invoiced to the Customer by BBEA), before the Customer is entitled to take any step in any proceedings commenced by BBEA for payment for that product. The Customer agrees that this clause may be pleaded as a bar to any action by the Customer until payment to the Stakeholder has been made. The Stakeholder nominated is authorised to invest the moneys at 30 day call with any major banking institution in Australia. The money so held to be applied in accordance with any appropriate Court determination or agreement between the parties resolving the proceedings.

#### 13. Products and Services:

- (a) To the extent permissible at law (including under the Australian Consumer Law), BBEA disclaims any responsibility or liability whatsoever relating to suitability for any particular purpose or process.
- (b) The Customer agrees to check all goods prior to use alteration or any application thereof whether in relation to suitability for any particular purpose, process or otherwise.
- (c) The Customer agrees to check and test all goods for compliance with all relevant applicable standards and regulatory bodies before use, on-sale or application and to use or apply same in accordance with all applicable standards, regulations and guidelines, with all manufacturers and/or BBEA recommendations and directions as well as with good commercial practice.
- (d) BBEA may update, modify, make substitution or alter any of its goods or any component or raw material incorporated in or used in forming any part of any goods as part of its ongoing business. The Customer agrees to accept current goods in substitution for any goods ordered provided they are not materially different.
- (e) To the extent permissible at law (including under the Australian Consumer Law), BBEA disclaims any responsibility or liability relating to any goods:
- (i) processed or made to designs, drawings, specifications or measurements etc. or with materials which are provided or approved (whether in part or fully) by or on behalf of the Customer; and/or
- (ii) utilised, stored, handled or used incorrectly or inappropriately.

#### 14. Warranties:

- (a) To the extent permissible at law (including under the Australian Consumer Law) and subject always to the other provisions of these Terms (including without limitation clauses 14(b), 39 and 41) all products sold by BBEA carry a warranty against defective workmanship and materials. Unless otherwise specified, this warranty shall extend for a period not exceeding 12 months from the date of invoice or that extended to BBEA by BBEA's suppliers. The warranty against faulty workmanship and materials on service and/or repairs supplied by BBEA will extend to a maximum of 30 days from completion of the service and/or repair.
- (b) Except to the extent of written warranties (if any) given by BBEA to the Customer or as otherwise required by law including the Australian Consumer Law, all warranties and representations including those expressed or implied by law, in respect of goods sold or services supplied, are excluded. Subject to the previous sentence, BBEA shall not be liable:
- (i) where the Customer has altered or modified the goods, misapplied the goods, or have subjected them to any unusual or non-recommended use, servicing or handling;
- (ii) for loss caused by any factors beyond BBEA's control;
- (iii) for second hand goods (provided that the Customer is made aware that the goods it is acquiring is second hand goods);
- (iv) where the terms of any written warranty or any manufacturers' handbook provided to the Customer has not been complied with;
- (v) for normal wear and tear;
- (vi) where electrical goods have not been used on the correct electrical current or not in the manner or not for the duty recommended by BBEA;
- (vii) for failure or damage to pumping equipment caused by sand or any abrasive material; or
- (viii) for repairs or jobs using Customer supplied material.

#### 15. Other Terms and Conditions and Notice:

- (a) Terms and/or conditions sought to be imposed by the Customer upon BBEA will not apply unless agreed in writing by BBEA. This includes where the Customer attempts to impose its terms and conditions upon BBEA by attaching them, referring to them or otherwise attempting to incorporate them in any purchase order and any such attempt will be deemed invalid. In no circumstances will BBEA be deemed to have agreed to the Customer's terms and conditions by accepting or otherwise actioning a Customer's purchase order – no matter what a purchase order stipulates to the contrary.
- (b) The Customer will be deemed to have notice of any change to these Terms, immediately BBEA adopts them, whether or not the Customer has "actual" notice.
- (c) The Customer shall be bound by any terms and conditions of trade adopted by BBEA immediately they are so adopted, notwithstanding any other purported, pre-existing or other terms and conditions.

#### 16. Recovery Costs:

The Customer will pay (on a full indemnity basis) all costs and expenses of BBEA, its legal advisers, mercantile agents and others acting on its behalf in respect of anything instituted or being considered as a result of any breach of these Terms or breach of any dealings with BBEA.

#### 17. Attornment:

To give effect to its obligations arising under these Terms (and especially clause 22) the Customer hereby irrevocably appoints any director of BBEA from time to time, as its attorney.

#### 18. Customer Restructure:

(a) The Customer will notify BBEA of any change in its structure or management including any sale or disposition of any part of the business of the Customer, any change in director, shareholder, management, partnership or trusteeship or sale of

any material part of its business ("Restructure") within 7 days of any such change.

(b) The Customer agrees it will:

- (i) cause any new entity created by virtue of a Restructure ("New Entity") to be bound by these Terms; and
- (ii) continue to be bound by these Terms despite a Restructure and will indemnify BBEA for any loss or damage it suffers as a result of a breach of these Terms by the New Entity.

#### 19. Jurisdiction:

All contracts made with BBEA shall be deemed to be made in Victoria and the parties submit to the jurisdiction of the appropriate Courts in or nearest Melbourne.

#### 20. Credit Limit:

BBEA can vary or withdraw any credit facility or limit it at any time at its discretion and without any liability to the Customer or any other party.

#### 21. Waiver:

If BBEA elects not to exercise any rights arising as a result of breach of these Terms it will not constitute a waiver of any rights relating to any subsequent or other breach.

#### 22. Security for Payment:

The Customer agrees subject to clause 34, that:

- (a) despite anything to the contrary contained herein or any other rights which BBEA may have howsoever, where the Customer is the owner of property (tangible or intangible), land, realty or any other asset capable of being charged and/or over which a security interest may be created ("Asset"), the Customer agrees, upon BBEA's written request, to mortgage and/or charge all of their joint and/or several interest in the Asset to BBEA to secure all amounts and other monetary obligations payable by the Customer to BBEA;
- (b) it grants a lien to BBEA over any of its property in the possession or control of BBEA until Full Payment;
- (c) it will execute any documents and to do all things requested by BBEA to register a mortgage (or such other security BBEA requires) over any current or later acquired real property the Customer has an interest in;
- (d) it consents unconditionally to BBEA lodging a caveat noting BBEA's interest in any current or later acquired real property the Customer has an interest in; and
- (e) any officer of BBEA may (without limitation) sign documentation to effect the Customer's compliance with this clause 22 by virtue of the provisions of clause 17.

#### 23. Force Majeure:

BBEA will not be in default or breach of any dealing with the Customer as a result of Force Majeure (i.e.: anything beyond BBEA's reasonable control).

#### 24. Intellectual Property:

- (a) If BBEA utilises any design, patent or intellectual property or follows any instruction provided by or on behalf of the Customer, the Customer indemnifies BBEA against any claim, proceeding, damages or liability for any loss, cost or expense arising as a result whether for any alleged infringement of any intellectual property or otherwise.
- (b) The Customer must not advertise, use or represent any intellectual property of BBEA or of any goods themselves in any way without the prior written consent of BBEA.
- (c) If the Customer breaches or permits any breach of this clause, it acknowledges BBEA may suffer claims by third parties as a result (e.g.: by models who's images are reproduced without authority and/or by parties who are entitled to exploit any intellectual property) and clause 34 will apply.
- (d) The Customer warrants and agrees that at all material times it will have all necessary industrial and intellectual property rights in any product or services it requests of BBEA.
- (e) BBEA will be and be deemed the owner of any intellectual property it creates or contributes to. Delivery thereof to the Customer or at the Customer's direction will only be and be deemed to be a licence to use any such intellectual property but only after all monies due to BBEA from the Customer are paid in full.

#### 25. Compliance with Acts and Regulations:

- (a) Where the Customer grant access to BBEA over the Customer's property for the purposes of BBEA providing goods or services to the Customer, the Customer shall ensure compliance with all legislation and regulations in relation to the property, including ensuring the property is in a safe state for BBEA and its employees to undertake any necessary work.
- (b) If BBEA have any concerns regarding the safety of BBEA's employees, in relation to the access and use of the Customer's property, BBEA shall be entitled to halt all work on the Customer's property, until such time as BBEA's safety concerns have been resolved. In that case the Customer shall be responsible for payment of work undertaken by BBEA to that point.

#### 26. Customer Material:

The Customer agrees that:

- (a) it has sole responsibility to ensure that materials, designs, drawings, specifications, procedures etc. which are provided by or on behalf of the Customer, to be used by BBEA in meeting any orders, are correct and appropriate in every particular; and
- (b) any of its materials or property used by BBEA in the production of any goods or the provision of any services shall be at the Customer's risk in all things and be of merchantable quality and fit for the purpose.

#### 27. Specifications:

- (a) Any illustration drawing or specification supplied by BBEA ("Specs") are drafts and approximates and are for illustration purposes and the Customer should not rely on the accuracy of such Specs in any way.
- (b) Any tangible or intellectual property rights in Specs remain the property of BBEA and may be recalled at any time.
- (c) Specs are to be treated at all times as confidential and not made use of without the prior written consent of BBEA.

#### 28. No Set-Off:

No Set-off or counterclaim will be made or applied by the Customer until payment in full of all bona fide invoices raised by BBEA (whether current or overdue) and this

clause may be pleaded as a bar to any action taken prior to such payment in full.

29. Trusts:

The Customer agrees that these Terms binds it not only in its own capacity but also as the Trustee of every trust of which it is a trustee.

30. No Merger:

Termination of these Terms and/or dealings between the Customer and BBEA ("Cessation") will not end those provisions of these Terms that are capable of surviving Cessation.

31. Stock Discretion:

BBEA has a continuing discretion to allocate available stock and gives no warranty as to certainty of supply unless expressly agreed in writing in advance.

32. Partial Delivery/Forward Orders:

If the Customer places forward orders or request partial or instalment delivery, the Customer agrees:

- (a) to pay for so much of any order as is from time to time delivered by BBEA; and
- (b) that no delay or failure to fulfil any part of any order will entitle the Customer to cancel or vary any order or delay or reduce any payment.

33. Acceptable Variation:

The Customer will accept variation in quantities at plus or minus 5% and will pay pro-rata for the actual quantity delivered.

34. Indemnity:

The Customer indemnifies BBEA against any claim or loss arising from or related in any way to any:

- (a) contract or transaction between BBEA and the Customer or anything arising therefrom;
- (b) breach of these Terms; or
- (c) transaction between BBEA and any third party who is engaged in any dealings which are directly or indirectly beneficial to the Customer and including any franchisor, franchisee, licensor or licensee of the Customer and any undisclosed purchaser of any asset of the Customer who has dealings with BBEA.

35. Insolvency:

(a) If the Customer commits or is involved in any act of insolvency, it will be deemed in default under these Terms.

(b) An act of insolvency includes bankruptcy, liquidation, receivership, administration or the like and failure to pay in accordance with these Terms.

36. Exports:

Exports of any goods are governed by these Terms and all international trade conventions and/or terms including but not limited to the United Nations Convention on Contracts for the International Sale of Goods (known as the Vienna Sales Convention 1980) are expressly excluded unless otherwise stipulated in these Terms or on BBEA's invoice for the goods.

37. Personal Property Securities Act 2009:

(a) The Customer acknowledges that these Terms create a security interest under the Personal Property Securities Act 2009 ("PPSA") in favour of BBEA in all goods supplied by BBEA to the Customer (and all goods previously supplied by BBEA to the Customer), and for avoidance of doubt, the proceeds of sale of those goods.

(b) The Customer consents to BBEA effecting a registration on the PPSA register (in any manner BBEA considers appropriate) in relation to any security interest contemplated by these Terms (including but not limited to an interest under clause 2 in relation to retention of title) and further agrees:

- (i) to do all things necessary and required by BBEA to make sure that the security interest is a perfected "purchase money security interest" under the PPSA; and
  - (ii) not to allow any third party to acquire a security interest in the goods.
- (c) To the extent that the goods are for the Customer's business use, the Customer agrees to the extent permitted under the PPSA, that the Customer has no right:
- (i) to receive notice of removal of an accession under the PPSA;
  - (ii) under Chapter 4 of the PPSA; or
  - (iii) under the PPSA to receive a copy of any verification statement of financing change statement under the PPSA.
- (d) Without in any way limiting clause 37(c), the Customer agrees that to the extent permitted under the PPSA, the Customer hereby waives its rights under sections 95, 96, 117, 118, 120, 121(4), 123, 125, 126, 128, 129, 130, 132, 134, 135, 142 and 143 of the PPSA.
- (e) Unless otherwise agreed to in writing by BBEA, the Customer waives its right to receive a verification statement in accordance with section 157 of the PPSA.
- (f) The Customer hereby waives its rights to receive notices under sections 95, 118, 121(4), 130, 132(3)(d) and 132(4) of the PPSA.
- (g) The Customer must not assign or grant a security interest in respect of any accounts owed to it in relation to the goods without BBEA's prior written consent.
- (h) Without limiting any other provision of these Terms, if the Customer makes a payment to BBEA at any time whether in connection with the supply of goods or otherwise, BBEA may, at its absolute discretion, apply that payment to first satisfy obligations that are not secured, then obligations that are secured, but not by a purchase money security interest, in the order in which those obligations were incurred, and then obligations that are secured by a purchase money security interest in the order in which those obligations were incurred.
- (i) Everything the Customer is required to do under this clause 37 is at the Customer's expense. The Customer agrees to pay or reimburse BBEA's costs and expenses in connection with anything BBEA does under this clause 37.

38. Pallets:

Only where requested by BBEA, the Customer will return all pallets and any re-useable packaging provided with goods. The Customer indemnifies BBEA for the full replacement cost thereof, if not returned to BBEA promptly and in good order following BBEA's request.

39. Exclusion of warranty:

To the extent permissible at law (including under the Australian Consumer Law),

BBEA is not bound by any warranty (and the Customer agrees not to make any claim against BBEA in relation to any warranty) in respect of goods or services unless all goods and services have paid for in full without set-off or deduction of any kind.

40. The Competition and Consumer Act 2010 (Cth) and Fair Trading Acts:

(a) Nothing in these Terms is intended to have the effect of contracting out of any applicable provisions of the Competition and Consumer Act 2010 (Cth) or the Fair Trading Acts in each of the States and Territories of Australia, except to the extent permitted by those Acts where applicable.

(b) If the Customer is a consumer for the purposes of the Australian Consumer Law Schedule of the Competition and Consumer Act 2010 ("ACL"), nothing in these Terms limits any remedy available for a failure of the guarantees in sections 56 and 57 of the ACL.

41. Limitation of Liability:

(a) This clause 41 is subject to any contrary provisions of any applicable law (including without limitation the Australian Consumer Law Schedule of the Competition and Consumer Act 2010), the operation of which cannot be excluded.

(b) Except as provided in subclause 41(c), BBEA's liability for a breach of these terms, a condition, warranty or a guarantee of supply or in relation to defective goods and services is limited to (at BBEA's election):

(i) in the case of goods BBEA supplies:

- A. the replacement of the goods or the supply of equivalent goods;
  - B. the repair of the goods; or
  - C. the payment of the cost of replacing the goods or of acquiring equivalent goods;
- (ii) in the case of services BBEA supplies, the supplying of the services again, and the Customer will limit any claim upon BBEA accordingly.

(c) If goods or services BBEA supplies are of a kind ordinarily acquired for personal, domestic or household use or consumption, and there is a "major" failure of the goods or services to meet any consumer guarantee under Schedule 2 (The Australian Consumer Law) of the Competition and Consumer Act 2010 (Cth) then the Customer may choose one of the following remedies:

(i) in the case of goods BBEA supplies:

- A. ask for a refund;
- B. return the goods and ask for an identical replacement, or one of similar value if reasonably available; or
- C. keep the goods and ask for compensation for the drop in value caused by the problem; or

(ii) in the case of services BBEA supplies:

- A. cancel the contract and pay a reasonable amount for the work done, or seek a refund; or
- B. for money already paid, keep the contract and negotiate a reduced price for the drop in value of the service — this may mean asking for some of the money back the Customer has already paid.

42. General Indemnity:

The Customer shall comply with all instructions of BBEA in relation to the handling, fitting and installation and use of goods supplied by BBEA and notwithstanding such compliance, the Customer shall to the extent permissible at law including under the Australian Consumer Law keep BBEA indemnified against all costs, claims, demand expenses and liabilities of whatsoever nature, including without prejudice to the generality of the foregoing, claims for death, personal injury, damage to property and consequential loss (including loss of profits) which may be made against BBEA or which BBEA may sustain, pay, incur as a result of or in connection with the manufacture, sale, export, import or use of the goods.

43. Tooling:

The Customer agrees that all tooling, material or intellectual property employed in the preparation for or production of any products or provision of any services will be and remain the property of BBEA notwithstanding any contribution by the Customer thereto.

44. Building and General

The rights, powers and remedies available to BBEA under these Terms are in addition to and are not in derogation of BBEA's powers, rights and remedies existing at common law, or given by any law at any time in force (including but not limited to the Building and Construction Industry Security of Payment Act 2002 (Vic)).

Note:

- All prices exclude GST and are subject to change without notice.
- All prices are ex-our warehouse and are plus freight.
- Images are for illustration purposes only.
- Curves in this price list are a guide only. It is recommended full curves are referred to prior to ordering.

Goods Return Form

Please call your state office for return approval and to obtain your goods return number.

Contact Name:	Return Number:	Date:
Customer:	Client:	Account No.:
Address:		
Desc. of Goods Returned / Model No.		Quantity:
Invoice No:		Purchase Date:
Returned for:	Reason for return:	
<input type="checkbox"/> Credit		
<input type="checkbox"/> Repair		
<input type="checkbox"/> Quote for repair		
<input type="checkbox"/> Warranty Assessment		
Date Installed:	Has the unit been replaced ?	Yes / No
Date Failed:	Invoice No.:	Date:

INSTALLED PRODUCT INFORMATION - fill in or circle appropriate information

<b>Motor</b>	<b>Pump</b>
Voltage 240 / 415 / 480	Suction Positive / Negative
Ventilation Yes / No	Suction Length
Protection Yes / No	Suction type & size
Type of protection	Discharge pressure psi / m
Average temperature	Liquid
Plant site Indoor / Outdoor	Plant site Indoor / Outdoor
<u>Application</u>	<u>Bore</u>
<input type="checkbox"/> Industrial	Power Mains / Generator
<input type="checkbox"/> Domestic	Cable size & length metres
<input type="checkbox"/> Irrigation	Bore ID mm
<input type="checkbox"/> Rural	Bore depth metres
<u>Waste / Sewerage</u>	Pump setting metres
Pit size x x metres	Pumping level metres
Control Automatic / Manual	Control Automatic / Manual
Pump protection Yes / No	Discharge pressure psi / m
Type of protection	Pump protection Yes / No
Discharge type and size	Type of protection
	Discharge type and size
Selected Duty m <sup>3</sup> hr / GPM	metres head / psi

Filling in the above information will enable your claim to be processed as soon as possible. Failure to do so will hinder the process and could influence a rejection of the claim

Form completed by:	Date:	Phone:	Fax:
--------------------	-------	--------	------

Please call your state office for return approval and to obtain your goods return number.

7 Damian Court, PO Box 7035 Dandenong VIC 3175 Telephone: 03 9793 9999 Facsimile: 03 9793 0022	Gateway Estate, 211-215 Walters Road Arndell Park NSW 2148 Telephone: 02 9671 3666 Facsimile: 02 9671 3644	50 Nestor Drive, Meadowbrook QLD 4131 PO Box 3780 Loganholme QLD 4129 Telephone: 07 3200 6488 Facsimile: 07 3200 3822
---------------------------------------------------------------------------------------------------------	---------------------------------------------------------------------------------------------------------------------	--------------------------------------------------------------------------------------------------------------------------------

Photocopy this page before using





Melbourne 03 9793 9999  
Sydney 02 9671 3666  
Brisbane 07 3200 6488

[www.brownbros.com.au](http://www.brownbros.com.au)