

SA SERIES SUBMERSIBLE AGITATOR



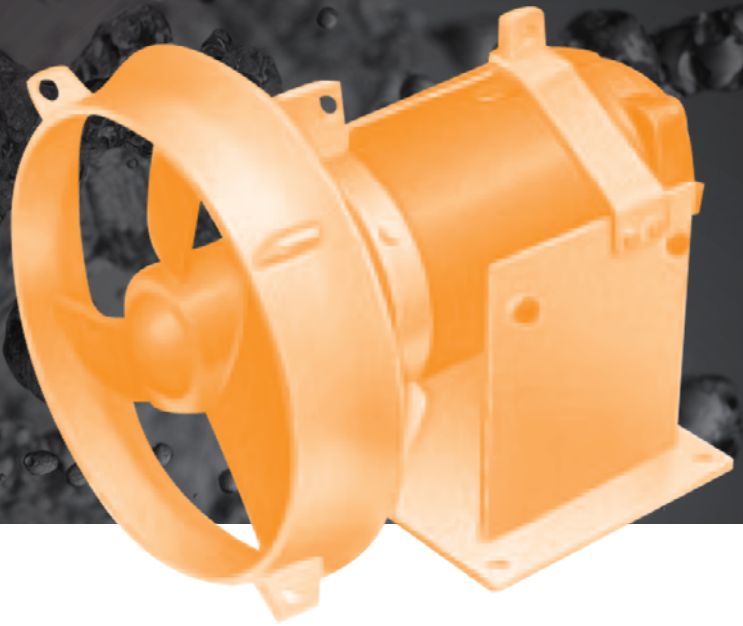
Suitable for the following applications:

stirring, mixing, solution, diffusion, suspension, anti-freezing, keeping even condensing and even temperature and generating powerful current.

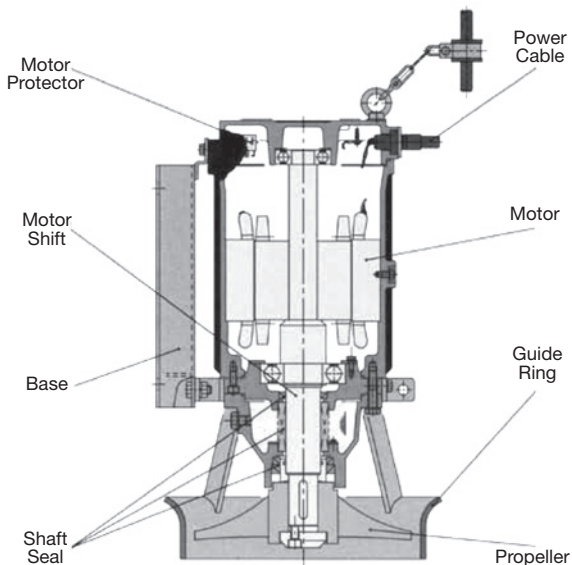
A variety of propellers are available depending on the service conditions, including the ability to cope with liquids of high specific gravity and high viscosity.

The unit is mounted on a guide bar giving it the flexibility to be raised and lowered operating at different depths, angled upwards or downwards and swiveled side-to-side.

Simple installation and maintenance.



CUT-AWAY SECTION



POWER CABLE

Safety conscience power cable is sealed at the joint with rubber molding into the core, to protect against water penetrating the motor.

MOTOR

High efficiency six pole motor designed specifically for submersible agitators.

GUIDE RING

Pressed and machined thick steel pipe is designed to generate a powerful current as well as create a strong extracting force.

PROPELLER

The efficient propeller made of high chrome alloy has the inlet side specifically curved to prevent clogging.

MOTOR PROTECTION

Built-in automatic reset type "Auto-Cut" is provided to protect the motor from burnout due to power phase failure etc.

MOTOR SHAFT

One piece stainless steel shaft minimizes vibration while increasing the life of the unit.

BASE

Provides stable installation and ensures easy access to the bolts and nuts in the base.

SHAFTSEAL

Backed by our many years of experience in submersible pumps the Mechanical Seal in conjunction with oil seals, provides excellent and reliable sealing.

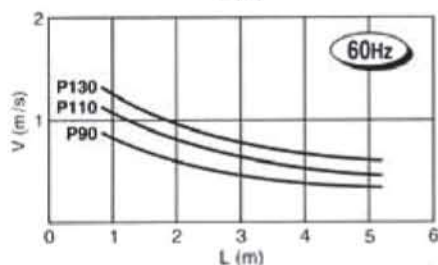
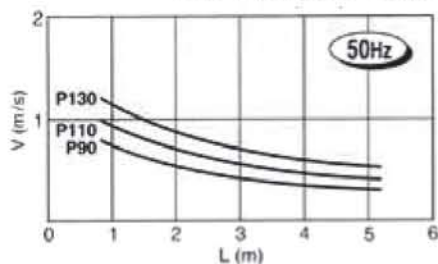
SUBMERSIBLE AGITATOR SA SERIES

APPLICATIONS

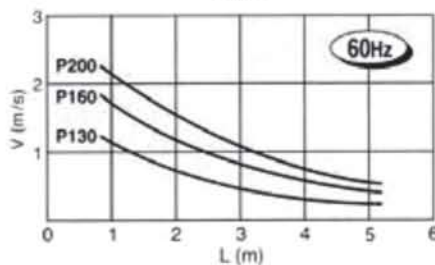
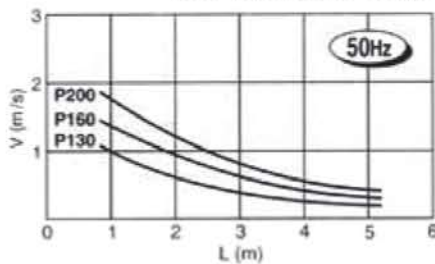
Factory drainage water treatment systems
Water supply and sewage water treatment plants
Farming and agriculture
Marine products industry
Rivers, civil engineering and public works

PERFORMANCE CURVES

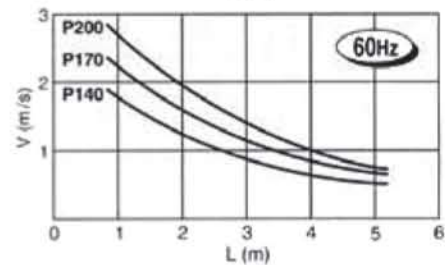
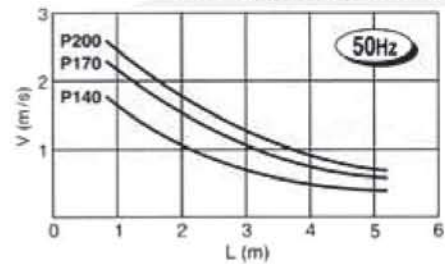
SA-250 P90 Propeller pitch 90mm
P110 Propeller pitch 110mm
P130 Propeller pitch 130mm



SA-300 P130 Propeller pitch 130mm
P160 Propeller pitch 160mm
P200 Propeller pitch 200mm



SA-350 P140 Propeller pitch 140mm
P170 Propeller pitch 170mm
P200 Propeller pitch 200mm



SPECIFICATIONS

Capacity	Frequency Hz	Propeller pitch mm	Flow speed at guide ring m/s	Capacity m ³ /min	Power input at fresh water kW	Force N
SA-250	50	90	0.93	2.8	0.38	44
		110	1.11	3.4	0.42	62
		130	1.32	4.0	0.44	88
	60	90	1.08	3.3	0.54	59
		110	1.34	4.1	0.59	91
		130	1.52	4.6	0.62	118
SA-300	50	130	1.41	6.2	1.0	145
		160	1.72	7.5	1.2	220
		200	2.02	8.8	1.5	300
	60	130	1.64	7.2	1.5	200
		160	2.04	8.9	1.8	305
		200	2.36	10.3	2.3	410
SA-350	50	140	1.54	8.4	1.5	215
		170	1.92	10.5	1.9	335
		200	2.22	12.1	2.3	450
	60	140	1.82	9.9	2.1	300
		170	2.25	12.3	2.8	460
		200	2.61	14.3	3.3	620